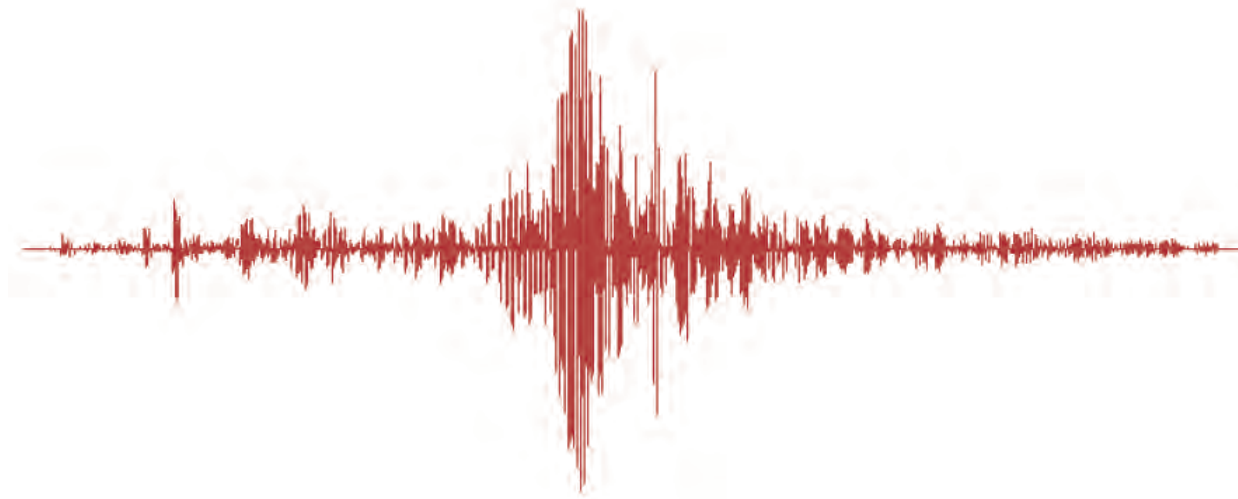


Homeowner's Guide to **Earthquake Safety & Environmental Hazards**



*First American
Natural Hazard Disclosures™*



- Residential Environmental Hazards (includes Carbon Monoxide)
- Protect Your Family from Lead Booklet (2021 Edition)
- Home Energy Rating System (HERS) Booklet
- Homeowner's Guide to Earthquake Safety (2020 Edition)

Order your NHD, Tax, and Environmental Report at www.fanhd.com or call 800.527.0027

CALIFORNIA ENVIRONMENTAL PROTECTION AGENCY

RESIDENTIAL ENVIRONMENTAL HAZARDS: *A Guide For Homeowners, Homebuyers, Landlords and Tenants* 2011

This guide was originally developed by M. B. Gilbert Associates, under contract with the California Department of Real Estate in cooperation with the California Department of Health Services. The 2005 edition was prepared by the California Department of Toxic Substances Control, in cooperation with the California Air Resources Board and the California Department of Health Services, and meets all State and Federal guidelines and lead disclosure requirements pursuant to the Residential Lead-Based Paint Hazard Reduction Act of 1992. The 2005 edition incorporates the Federal "Protect Your Family from Lead" pamphlet. The 2011 update was developed California Department of Toxic Substances Control. This booklet is offered for information purposes only, not as a reflection of the position of the administration of the State of California.

Table of Contents

INTRODUCTION	3
CHAPTER I ASBESTOS	3
CHAPTER II CARBON MONOXIDE	10
CHAPTER III FORMALDEHYDE	13
CHAPTER IV HAZARDOUS WASTE	17
CHAPTER V HOUSEHOLD HAZARDOUS WASTE	21
CHAPTER VI LEAD	24
CHAPTER VII MOLD	31
CHAPTER VIII RADON	36
APPENDIX A LIST OF FEDERAL AND STATE AGENCIES	42
APPENDIX B GLOSSARY	46

Introduction

The California Departments of Real Estate and Health Services originally prepared this booklet in response to the California legislative mandate (Chapter 969, Statutes of 1989, AB 983, Bane) to inform the homeowner and prospective homeowner about environmental hazards located on and affecting residential property.

The 2005 edition was prepared by the California Department of Toxic Substances Control, in cooperation with the California Air Resources Board and the California Department of Health Services' Childhood Lead Poisoning Prevention Program, Radon Program, and Division of Drinking Water and Environmental Management, in response to a 1994 legislative mandate (Chapter 264, Statutes of 1994, AB 2753, Sher). The 1994 legislation also requires this booklet to consolidate the California disclosure requirements (Ch. 969, Statutes of 1989) and the federal disclosure requirements (The Residential Lead-Based Paint Hazard Reduction Act of 1992).

The information contained in this booklet is an overview of some environmental hazards which may be found on or in residential property and which may affect residential real estate. Since this booklet is not meant to be all inclusive, it should be used only for general guidance. Although law requires the disclosure of known hazards, an environmental survey may be conducted to obtain further information. Homeowners, tenants, and prospective homeowners may wish to obtain other literature for additional information on hazards of concern.

In California, sellers are required to disclose the presence of any known environmental hazard. A statement that the homeowner is unaware of environmental hazards is not a guarantee that the property is free of such hazards. It is in the homeowner's and prospective homeowner's interest to know what hazards are common, where they are found, and how they might be mitigated. This booklet will provide homeowners and prospective homeowners with the information and additional resources needed to make an informed decision about environmental hazards that may be present on a property.

Because of the contribution of household hazardous wastes to the problem of hazardous waste disposal, a section on proper storage and disposal of household hazardous products is included. In discussing health impacts of hazardous substances, lifetime exposure to low levels is emphasized because the resident is more likely to encounter this type of exposure than exposure to high levels of hazards for a short time. Sources of additional information and a list of government agencies are provided for further information.

Pursuant to AB 983, if this environmental hazards booklet is made available to homeowners or prospective homeowners, real estate licensees and home sellers are not required to provide additional information on such hazards. However, delivery of this publication to homeowners or prospective homeowners does not relieve home sellers

and real estate licensees of the responsibility to disclose the existence of environmental hazards when such hazards are known to them.

The material is presented with the understanding that the publisher is not engaged in offering legal or other professional advice. If legal or other expert assistance is required, the services of a skilled professional should be obtained.

CHAPTER I ASBESTOS

What is Asbestos?

Asbestos is the name given to a number of naturally occurring fibrous silicate minerals that have been mined for their useful properties such as thermal insulation, chemical and thermal stability, and high tensile strength. The three common types of asbestos are chrysotile, amosite, and crocidolite. Chrysotile, also known as white asbestos and a member of the serpentine mineral group, is the most common. Asbestos can only be identified under a microscope.

Where is asbestos found in the home?

Asbestos has been used in many products found in the home that provide insulation, strength, and fire protection. In 1989, the U.S. Environmental Protection Agency (U.S. EPA) announced a phased ban of asbestos products to be completed by 1996. However, in 1991, the U.S. Fifth Circuit Court of Appeals overturned and remanded the asbestos ban and phase-out rule to EPA. Today, most asbestos products can still be legally manufactured, although production of asbestos containing materials has decreased dramatically since the late 1970s. The most common items in the home that may contain asbestos are:

- Vinyl flooring
- Duct wrapping on heating and air conditioning systems
- Insulation on hot water pipes and boilers
- Some roofing shingles, and siding
- Vermiculite attic insulation
- Ceiling and wall insulation
- Sheet rock taping compounds and some ceiling materials

Asbestos that has been sprayed on ceilings often has a spongy, “cottage cheese” appearance with irregular soft surfaces. Asbestos troweled on walls has a textured, firm appearance. Vermiculite attic insulation, found both in the attic between trusses and in-between walls, also has the potential to contain asbestos. Vermiculite attic insulation is a pebble-like, pour-in product and is usually light-brown or gold in color.

Manufacturers can provide information on the asbestos content of home products. A certified asbestos consultant can be hired to test building material and determine whether or not asbestos is present and to give advice about how to take care of it safely. Current asbestos bulk testing methods may be insufficient to determine the presence of asbestos in vermiculite attic insulation. For more information on vermiculite, see U.S. EPA’s Protect Your Family from Asbestos-Contaminated Vermiculite at www.epa.gov/asbestos/pubs/verm_questions.html.

How is asbestos harmful?

Intact or sealed (painted or taped over) asbestos is not harmful unless it becomes damaged and friable. Friable means the material can be easily crushed or pulverized to a powder by hand pressure. Friable materials have a higher potential to release fibers. Asbestos fibers that are released into the air and inhaled can accumulate in the lungs and pose a health risk. This risk can be divided into two general categories: risk of asbestosis (lung scarring); and increased risk of cancer.

The U.S. EPA classifies asbestos as a known human carcinogen. If asbestos fibers are inhaled, the chance of contracting lung cancer or mesothelioma (cancer of the lining of the chest or abdomen) increases. The more asbestos is inhaled, the greater risk of developing cancer. Smokers who are exposed to high levels of asbestos have a much greater risk of developing lung cancer than nonsmokers exposed to the same level. Symptoms of cancer may not develop until 10-40 years after the first exposure to asbestos.

Is there a safe level of asbestos?

There is no safe level of asbestos exposure. The more asbestos fibers you inhale, the greater your risk of developing lung cancer and asbestos-related disease. Exposure to asbestos should always be avoided.

How can asbestos content in materials be determined?

When you suspect asbestos is present in building materials, it is important to have the materials tested by a qualified laboratory. Visual inspection alone is not enough to identify the presence of asbestos. It is recommended that you contact a certified asbestos consultant to take samples of potential asbestos containing materials and have them tested by a qualified laboratory. A list of asbestos consultants who have been certified by the California Department of Industrial Relations, Division of Occupational Safety and Health (Cal/OSHA) for evaluating building materials and recommending a course of action may be obtained on the Internet at www.dir.ca.gov/Databases/doshacru/acruList.asp or by calling 510-286-7362 .

How should the homeowner repair or remove asbestos?

Repair or removal of asbestos by the homeowner may be unwise if the damage is severe, since it may result in unnecessary exposure to airborne fibers. In cases where planned remodeling projects are expected to damage asbestos-containing materials, it is wise to hire a qualified contractor to remove the material. The homeowner should use the following guidelines in choosing a qualified contractor:

- Check to see if the contractor is licensed by the California Contractors State License Board and registered with the California Department of Industrial

Relations, Division of Occupational Safety and Health (Cal/OSHA) for doing asbestos work.

- Be aware that some contractors may remove material incorrectly and still charge a substantial fee.
- Require references from the contractor and check them to see if the contractor's work is satisfactory.
- Require the contractor to specify his safety procedures in writing.

The homeowner can expect to pay three times as much for a small removal job than a large one as it is expensive for a contractor to set up all the necessary safety equipment. You should consider hiring a certified asbestos consultant to review safety procedures and oversee the performance of the contractor.

Does the law require asbestos mitigation?

Asbestos mitigation is at the discretion of the homeowner. Even if material contains asbestos, the homeowner may choose to leave it alone or, if necessary, repair it. If the home owner chooses to do his or her own repairs, the home owner must comply with the law. The free Department of Toxic Substances Control fact sheet "Managing Asbestos Waste" is available on the DTSC Web site at www.dtsc.ca.gov/PublicationsForms/upload/OAD_FS_Asbestos1.pdf

What about naturally occurring asbestos that is found near the home?

Naturally Occurring Asbestos (NOA) includes six regulated naturally occurring minerals (actinolite, amosite, anthophyllite, chrysotile, crocidolite, and tremolite) and is commonly found in California within serpentine and other ultramafic rocks and soils of the Coastal Ranges, Klamath Mountains, and the Sierra Nevada Mountains. The California Geological Survey has produced a map that identifies areas more likely to contain NOA in California. The map may be found online at www.consrv.ca.gov/cgs/minerals/hazardous_minerals/asbestos/index.htm.

Asbestos fibers may be released into the air as a result of activities which disturb NOA-containing rock or soils. Development construction activities in areas that contain NOA may release asbestos. Also, driving on roads or driveways surfaced with asbestos containing gravel, such as serpentine, may release asbestos. The California Air Resources Board (ARB) has established Asbestos Airborne Toxic Control Measures (ATCMs) to regulate the surfacing of roads with asbestos-containing gravels and construction and grading activities in areas potentially containing asbestos. For more information about naturally occurring asbestos, go to www.arb.ca.gov/toxics/asbestos/asbestos.htm.

Hotlines:

For information on the identification and abatement of asbestos hazards in the home, and other information about asbestos visit the U.S. EPA Asbestos Web site at www.epa.gov/asbestos .

For technical assistance and information about:

- Toxic Substances Control Act (TSCA);
- Regulations and programs administered under TSCA, including asbestos, lead-based paint, and PCB's; and
- EPA's 33/60 voluntary pollution prevention program;

Contact the Toxic Substances Control Act Assistance Information Service (T.A.I.S.), Washington, D.C. at:

Telephone: (202) 554-1404
Fax: (202) 554-560
E-mail: tsca-hotline@epa.gov

Publications:

Indoor Air Quality Infosheet - Asbestos

This free publication is available from:

American Lung Association
Environmental Health Department
909 12th Street
Sacramento, CA 95814
Telephone: (800) LUNG-USA [(800) 586-4872]

***The Inside Story - A Guide to Indoor Air Quality
Asbestos in Your Home***

These free publications are available from:

U.S. EPA Indoor Air Quality Information Clearinghouse
P.O. Box 37133
Washington, D.C. 20013-7133
Telephone: (800) 438-4318
FAX: (202) 484-1510
E-mail: iaqinfo@aol.com
Web: www.epa.gov/iaq

Asbestos in the Home and Workplace

This list is available on the Internet from:
California Department of Health Services
Indoor Air Quality Program

http://www.cdph.ca.gov/programs/IAQ/Documents/IAQ_Asbestos_2000-03.pdf

List of Certified Asbestos Consultants

This list is available on the Internet or by mail for \$8.00 from:

California Department of Industrial Relations
Division of Occupational Safety and Health (Cal/OSHA)
Asbestos Consultant Certification Unit
2211 Park Towne Circle, Suite 1
Sacramento, CA 95825
Telephone: (916) 574-2993
Web: www.dir.ca.gov

List of Asbestos Abatement Contractors

This list is available for \$25.00 from:

California Department of Industrial Relations
Division of Occupational Safety and Health (Cal/OSHA)
Asbestos Contractor Registration Unit
455 Golden Gate Avenue, 10th Floor
San Francisco, CA 94102
Telephone: (415) 703-5190
Web: www.dir.ca.gov

What You Should Know Before You Hire a Contractor

This free publication is available from:

California Contractors State License Board
9835 Goethe Road
P.O. Box 26000
Sacramento, CA 95827
Telephone: (800) 321-2752 (To receive the publication, leave your name and address on message phone.)

Note: Telephone numbers and prices were correct at the date of publication of this booklet, but are subject to change.

CHAPTER II CARBON MONOXIDE

What is carbon monoxide?

Carbon Monoxide (CO) is an odorless, colorless and tasteless gas. It is highly toxic to humans and animals in higher quantities.

Because it is impossible to see, taste or smell, breathing CO can incapacitate or kill you before you are aware it is present in your home. At lower concentrations, CO may produce flu-like symptoms, including headache, dizziness, disorientation, nausea and fatigue.

What are the sources of carbon monoxide in the home?

CO is the result of incomplete combustion of carbon fuels and is produced from both man-made and natural sources. Typical sources of CO in the home are:

- Unvented kerosene and gas space heaters
- Gas water heaters
- Improperly adjusted or maintained furnaces or boilers
- Wood stoves and fireplaces
- Gas stoves and ovens
- Gasoline powered equipment, such as generators
- Automobile exhaust
- Tobacco smoke

How is carbon monoxide harmful?

Following inhalation, CO combines with hemoglobin in the blood producing carboxyhemoglobin, which is ineffective in delivering oxygen to the body tissues. Carbon monoxide binds to other molecules such as myoglobin and mitochondrial cytochrome oxidase and may cause significant damage to the heart and central nervous system.

At low concentrations, CO exposure may result in fatigue in healthy individuals and chest pain in people with heart disease. At higher concentrations, CO may result in headache, nausea, dizziness, confusion, impaired vision, angina and reduced brain function, depending upon the concentration in air and length of exposure. Exposure to very high concentrations of CO can be fatal.

Breathing high levels of CO during pregnancy may result in miscarriage. Breathing moderate levels of CO during pregnancy can result in slower than normal mental development of your child. In animal studies, exposure to CO during pregnancy had

effects on birth weight, the heart, the central nervous system and development. Children with asthma may be more susceptible to respiratory effects following exposure to CO.

What levels of carbon monoxide are found in the home?

Typical levels in homes with no gas appliances range from 0.5 to 5 parts per million (ppm). Levels measured near properly adjusted gas appliances were between 5 and 15 ppm, while levels near poorly adjusted appliances can be 30 ppm or higher.

Is there a safe level of carbon monoxide?

No standards for CO have been adopted for indoor air. The National Ambient Air Quality Standards for outdoor air are 9 ppm for eight hours and 35 ppm for one hour. The State of California Air Resources Board (ARB) air quality standards for CO are 9 ppm for eight hours and 20 ppm for one hour. The State of California, Office of Environmental Health Hazard Assessment (OEHHA) established an acute, one hour exposure level of 23,000 micrograms per cubic meter of air ($\mu\text{g}/\text{m}^3$) or 20 ppm for CO. This exposure level was based on heart toxicity.

Can carbon monoxide be detected and measured?

California Senate Bill 183 (SB 183) will require owners of single family homes that have a fossil-fuel burning appliance, fireplace or attached garage to install a CO alarm(s) by July 1, 2011. CO detectors trigger an alarm based on accumulation of CO over time or continuous detection of CO.

What can be done to reduce exposure to carbon monoxide?

Always make sure that gas appliances are maintained and properly installed. Here are some common tips to reduce potential CO levels in your home:

- Make sure appliances that burn natural gas, kerosene or other fuels are properly installed and vented.
- Have all appliances maintained on a regular basis.
- Always follow the manufacturer's recommendations and instructions for installation of these devices.
- Do not use portable gas heaters in enclosed indoor settings.
- Do not let your car idle for long periods of time inside the garage.
- Install and use an exhaust fan vented to the outside over gas stoves.
- Make sure the flue is open when using your fireplace.
- Use properly sized wood stoves certified to meet emission standards.
- Most importantly, install carbon monoxide detectors throughout the home.

Links to Additional Information on Carbon Monoxide:

U.S. EPA, An Introduction to Indoor Air Quality (IAQ), Basic Information on Pollutants and Sources of Indoor Air Pollution, Carbon Monoxide,
www.epa.gov/iaq/co.html

OEHHA, Impacts of Criteria Air Pollutants on the Respiratory Health of Children
www.oehha.ca.gov/public_info/public/kids/pdf/balmes.pdf

USFA, DHS, Exposing an Invisible Killer: The Dangers of Carbon Monoxide
www.usfa.dhs.gov/citizens/co/fswy17.shtm

Centers for Disease Control and Prevention (CDC), Carbon Monoxide Poisoning Fact Sheet
www.cdc.gov/co/faqs.htm

Agency for Toxic Substances Disease Registry, CDC, ToxFAQs for Carbon Monoxide
www.atsdr.cdc.gov/toxfags/tf.asp?id=1163&tid=25

American Lung Association, Carbon Monoxide Indoors
www.lungusa.org/healthy-air/home/resources/carbon-monoxide-indoors.html

US Consumer Product Safety Commission (CPSC), Carbon Monoxide Questions and Answers
www.cpsc.gov/cpsc/pub/pubs/466.html

CHAPTER III FORMALDEHYDE

What is formaldehyde?

Formaldehyde is a colorless, pungent gas that is soluble in water and most organic solvents. It is used as a raw material in the manufacture of building materials, many consumer products, and some fabrics. Formaldehyde is found in the outdoor air at an average concentration of approximately 3 parts per billion (ppb) or 3.7 micrograms per cubic meter of air ($\mu\text{g}/\text{m}^3$).

How is formaldehyde harmful?

The Office of Environmental Health Hazard Assessment (OEHHA) has concluded that exposures to formaldehyde can cause cancer in humans. In 2004, the International Agency for Cancer Research upgraded formaldehyde to a Group I (known human) carcinogen, based on human epidemiology studies of nasopharyngeal cancer. Exposure to airborne formaldehyde may also cause other illnesses, such as irritation to the eyes, skin, and respiratory tract; coughing; sore or burning throat; nausea; and headaches. Formaldehyde may also worsen asthma or allergy symptoms in those with such pre-existing sensitivities. Reducing exposures to formaldehyde will reduce these health risks.

What levels of formaldehyde are found in the home?

The average formaldehyde concentration inside California homes is about 14 ppb ($17 \mu\text{g}/\text{m}^3$) in conventional homes and 37 ppb ($45 \mu\text{g}/\text{m}^3$) in manufactured homes. Formaldehyde concentrations have been measured at levels greater than 200 ppb ($246 \mu\text{g}/\text{m}^3$) in both manufactured and new conventional homes. However, concentrations inside manufactured homes are generally higher than those in conventional homes due to the increased use of composite wood products.

What are the sources of formaldehyde in the home?

Indoor sources are the major cause of exposures to formaldehyde because people spend most of their time indoors, and there are many indoor sources of formaldehyde that typically produce concentrations several times higher than outdoor levels. Composite wood products are probably the greatest source of formaldehyde in the home. Other sources include other building materials such as some paints, coatings, and wallpaper; some consumer products such as fingernail products; permanent pressed fabric such as clothing and draperies; and combustion sources such as cigarettes and gas appliances.

What are composite wood products?

Plywood, particleboard, and oriented strandboard are composite wood products that are bound together with formaldehyde-containing resins. The two most commonly used resins are urea-formaldehyde and phenol-formaldehyde. Composite wood products used within the home include:

- Particleboard - used for cabinetry, subflooring, shelving, and furniture
- Hardwood plywood - used in paneling, furniture, and as a wall covering
- Medium density fiberboard - used in cabinets, doors, table tops, furniture, and shelving
- Oriented strandboard and softwood plywood - used for exterior use and subflooring, which are manufactured using low-emitting phenol-formaldehyde resins

Why is formaldehyde emitted from these products?

In the production of the resins, not all formaldehyde is bound tightly. Unbound or free formaldehyde can be released later as a gas from composite wood products. Formaldehyde emissions are highest from products made with urea-formaldehyde resins and new products. Emissions ordinarily decrease to low levels over time, as the product ages and off-gasses. If properly manufactured, composite wood products that incorporate phenol-formaldehyde resins do not release significant amounts of formaldehyde.

Is urea-formaldehyde foam a significant source of formaldehyde in homes?

Urea-formaldehyde foam insulation (UFFI) was installed in the wall cavities of some homes during the 1970s and has been used in the manufacture of mobile homes. The Consumer Product Safety Commission banned the use of UFFI in homes and schools in 1982. Although a Federal Court subsequently removed this ban for procedural reasons, UFFI is not currently being installed in homes in California because it does not meet the insulation standards of the California Energy Commission. In homes where UFFI was installed prior to 1982, formaldehyde concentrations have declined with time to levels that are generally comparable to those in homes without UFFI.

How can formaldehyde be detected and measured?

Levels of formaldehyde can be measured by chemical analysis of air samples collected indoors. In general, ambient air monitoring of formaldehyde is done on a 24-hour or several day basis using standard analytical techniques and methods established by federal and state agencies. A useful indicator of the presence of indoor formaldehyde is knowledge of the formaldehyde content or emissions of products. This information can usually be obtained from the manufacturer. In general, you do not need to measure formaldehyde levels if there are few or no materials in the building known to emit high levels of formaldehyde, because levels would then be expected to approach the lower outdoor levels. However, if known or suspected sources are extensively present and cannot be readily removed, it is wise to measure the levels of formaldehyde, to assure that levels are no greater than 7 ppb ($9 \mu\text{g}/\text{m}^3$).

Is there a safe level of formaldehyde?

Most people experience eye and throat irritation when exposed to formaldehyde at levels above 100 ppb (123 µg/m³). Because people differ in their sensitivity to toxic effects, it is difficult to precisely define a concentration of formaldehyde that would be harmless to all people under all circumstances.

Levels in the outdoor air may be considered as the lowest levels that can practicably be achieved in the home. OEHHA has established acute (55 µg/m³, or 44 ppb, one-hour average) and chronic (9 µg/m³, or 7 ppb, long-term average) exposure levels to identify the levels at which sensitive individuals might experience adverse non-cancer health effects. For indoor environments, OEHHA has also identified 7 ppb as the eight hour average level that is protective against non-cancer effects for sensitive individuals. Because formaldehyde may cause cancer, and there is no known level that is absolutely risk free, the California Air Resources Board (ARB) recommends that indoor formaldehyde levels be reduced as much as possible.

What can be done to reduce indoor formaldehyde levels?

Immediate measures include opening windows to increase ventilation and reducing the number of new composite wood products in a home. Where possible, replace composite wood products such as bookcases with products made from solid wood or non-wood materials. Formaldehyde emissions increase with increasing humidity and temperature. Therefore, reducing the temperature and humidity in the home will reduce formaldehyde levels.

Where the source of formaldehyde is wood paneling or extensive cabinetry, these measures may not be adequate. In those cases, removal of the paneling or coating, or replacement of cabinets may be necessary. Local trade organizations and builders' associations may be helpful in finding a contractor to do this work. You can find additional suggestions for reducing indoor formaldehyde levels in the publications listed below.

Publications:

Formaldehyde in the Home-Indoor Air Quality Guideline #1, updated August 2004, www.arb.ca.gov/research/indoor/guidelines.htm

OEHHA, Appendix D. Individual Acute, 8-Hour, and Chronic Reference Exposure Level Summaries, December 2008, www.oehha.ca.gov/air/hot_spots/2008/AppendixD1_final.pdf#page=128

Determination of Formaldehyde and Toluene Diisocyanate Emissions from Indoor Residential Sources, www.arb.ca.gov/research/apr/past/indoor.htm , click on Toxic Air Contaminants, scroll down.

Final Report on the Identification of Formaldehyde as a Toxic Air Contaminant - 1992.

These free publications are available from:
California Air Resources Board, Research Division, Indoor Exposure Assessment
Section
P.O. Box 2815
Sacramento, CA 95812
Telephone: (916) 322-8282 (For first two publications listed)
Telephone: (916) 322-7072 (For third publication listed)
Web: www.arb.ca.gov

***The Inside Story - A Guide to Indoor Air Quality
An Update on Formaldehyde***

These free publications are available from:
Indoor Air Quality Information Clearinghouse
P.O. Box 37133
Washington, D.C. 20013-7133
Telephone: (800) 438-4318
FAX: (202) 484-1510
E-mail: iaqinfo@aol.com
Web: www.epa.gov/iaq/

***A Consumers Guide to Manufactured Housing
Manufactured Housing for Families***

These free publications are available from:
California Department of Housing and Community Development
Division of Administration
P.O. Box 31
Sacramento, CA 95812-0031
Telephone: (916) 445-3338
Web: www.hcd.ca.gov

Note: Telephone numbers and prices were correct at the date of publication of this booklet, but are subject to change.

CHAPTER IV HAZARDOUS WASTE

What is hazardous waste?

Hazardous waste is anything left over from a manufacturing process, chemical laboratory, or a commercial product that is dangerous and could hurt people, animals, or the environment. Many industries, such as oil and gas, petrochemical, electronics, dry cleaners, and print shops, generate hazardous waste.

When hazardous waste is properly managed it is shipped to special facilities for treatment, storage, disposal, or recycling. Hazardous waste that is not properly managed may escape into the environment and contaminate the soil, surface and ground water, or pollute the air. Some causes of hazardous waste releases are leaking underground storage tanks, poorly contained landfills or ponds, hazardous waste spills, or illegal dumping directly on land or water.

What is California doing to locate and clean up hazardous waste sites?

The U.S. EPA has targeted about 1,200 sites nationwide for federal cleanup under the federal Superfund Program. Almost 100 of those sites are in California. California is overseeing the cleanup of hundreds of other sites under a state Superfund administered by the California Department of Toxic Substances Control (DTSC). DTSC works jointly with U.S. EPA and other state agencies, such as the California Regional Water Quality Control Boards and local health departments, to manage hazardous waste problems. The primary purpose of site cleanup and mitigation activities at hazardous waste sites is to reduce or eliminate the risks the sites pose to public health or the environment.

How can the prospective homeowner determine if a home is affected by a hazardous waste site?

State law requires certain written disclosures to be made to prospective homeowners. The seller is required to disclose whether he or she is aware that the property has any environmental hazards such as asbestos, formaldehyde, radon, lead-based paint, fuel or chemical storage tanks, or contaminated soil or water. You can find additional information on real estate disclosure "Disclosures in Real Property Transactions" available from the California Department of Real Estate. See Appendix A in this document for information on how to contact them.

A prospective homeowner may also get information about hazardous waste sites near a home by consulting the "Hazardous Waste and Substances Sites List" which is maintained by the California Environmental Protection Agency (CalEPA). The list is a comprehensive inventory of hazardous waste sites in California, including contaminated wells, leaking underground storage tanks, and sanitary landfills from which there is a known migration of hazardous waste. It also lists active federal and state hazardous waste sites scheduled for cleanup as well as potential hazardous waste sites.

Information on how you can get a copy of this list is at the end of this chapter. The addresses of federal and state agencies that manage hazardous waste programs are listed in Appendix A.

A homeowner or prospective homeowner may choose to hire a registered environmental assessor to investigate a known or suspected environmental hazard at a property. To obtain a list of registered environmental assessors, contact the Registered Environmental Assessor Program at:

P.O. Box 806
Sacramento, CA 95812-0806
Telephone: (916) 324-6881
FAX (916) 324-1379
Web: www.dtsc.ca.gov/rea/

Internet Resources:

You can learn more about the role of the Department of Toxic Substances Control in protecting Californians from hazardous waste by visiting its Web site at

www.dtsc.ca.gov .

Department of Toxic Substances Control Envirostor Database can be accessed at

<http://www.envirostor.dtsc.ca.gov/public/>.

The Federal database of potentially contaminated sites is available at

www.epa.gov/superfund/sites/index.htm.

The Hazardous Waste and Substances Sites List (Cortese List) on the locations of hazardous materials release sites is at

www.dtsc.ca.gov/database/Calsites/Cortese_List.cfm .

The List of Leaking Underground Storage Tanks is available on the Web at

www.geotracker.waterboards.ca.gov.

Hotlines:

For information on the federal Superfund program and the National Priorities List (NPL), contact the U.S. EPA RCRA, Superfund, EPCRA hotline at:

Telephone: (800) 424-9346

Publications:

Disclosures in Real Property Transactions

This publication is available for \$2.00 plus tax from:

California Department of Real Estate Book Orders

P.O. Box 187006

Sacramento, CA 95818-7006 (Mail orders only; a self-addressed envelope is required.)

Web: http://www.dre.ca.gov/pdf_docs/re6.pdf

List of Registered Environmental Assessors

This list is free if you are hiring a registered environmental assessor. If you wish to use it as a mailing list, it is available on CD for \$6.25 and as a hard-copy printout for \$35.00. It's also available free on our Web site at:

www.dtsc.ca.gov/rea

Department of Toxic Substances Control
Registered Environmental Assessor Program
P.O. Box 806
Sacramento, CA 95812-0806
Telephone: (916) 324-6881

The Toxics Directory: References and Resources on the Health Effects of Toxic Substances

This publication is available for \$9.90 from:
California Department of General Services
Documents and Publications
P.O. Box 1015

North Highlands, CA 95660

(Send written request with your name and street address. Make your check out to *Procurement Publications*.)

Ensuring Safe Drinking Water (600M91012)

This free publication is available from:
U.S. Environmental Protection Agency
Public Information Center
1200 Pennsylvania Ave, N.W.
Washington, D.C. 20460
Telephone: (800) 490-9198

Consumer's Guide to California Drinking Water

This publication is available for \$4.00 (plus 5% shipping charge and tax) from:

Local Government Commission
1414 K Street, Suite #600
Sacramento, CA 95814
Telephone: (916) 448-1198 x307
Web: www.lgc.org

Is Your Drinking Water Safe? (PB94-203387)

This publication is available for \$19.50 plus \$4.00 shipping from:

National Technical Information Service
5285 Port Royal Road
Springfield, VA 22161
Telephone: (800) 553-6847
Web: www.ntis.gov

Note: Telephone numbers and prices were correct at the date of publication of this booklet, but are subject to change.

CHAPTER V HOUSEHOLD HAZARDOUS WASTE

What is household hazardous waste?

Although hazardous waste is usually associated with industrial or manufacturing processes, each year Californians discard tons of hazardous wastes in trash cans or down the drain. To determine whether a product is hazardous, ask yourself these questions:

- Is it poisonous when swallowed, touched, or inhaled?
- Does it catch fire easily?
- Is it corrosive? Can it eat through certain containers?
- Is it reactive? Could it explode if it is improperly stored, spilled, or mixed with other products?

If you answer yes to any these questions, then the product is hazardous. Information about whether a product is hazardous usually can be found on the container label. The words “caustic,” “flammable,” “toxic,” and “ignitable” mean that the product is hazardous.

Some products are hazardous on their own, but can become even more dangerous when they are mixed with other household products. For example, most people know that bleach is poisonous, but when it is mixed with ammonia-based cleaners it releases chlorine and hydrazine gases, both of which are extremely poisonous.

Some other hazardous household products are:

- Cleaning products containing ammonia
- Chlorine bleach and cleaning products containing it
- Drain cleaners
- Carpet cleaning products
- Oven cleaners
- Metal polishes
- Garden supplies such as weed and insect killers, rat poison, and fertilizer
- Charcoal lighter fluid, and kerosene
- Automotive supplies such as antifreeze, motor oil, gasoline, batteries and brake fluid
- Paint, varnish, paint removers, glues, and waxes
- Electronic products such as cathode ray tubes, televisions, computers, cell phones
- Universal wastes such as fluorescent lights, small batteries, and products containing mercury

How should hazardous household products be stored?

Hazardous products should be stored in a cool, dry, secure location. They should be stored in locked cupboards, locked drawers, or on a high shelf out of the reach of children and pets. To prevent hazardous products from spilling during an earthquake, shelves should be firmly secured to the wall and have a restraining bar along the side.

The following guidelines will help you properly store household hazardous products:

- Store poisonous products apart from other products.
- Sort products into hazardous waste categories of poisonous, flammable, corrosive, and reactive and store them separately. For example, flammable products such as charcoal lighter and waste oil should be stored apart from corrosive products such as drain cleaner and acid batteries. It is important to store reactive products in a separate location.
- Store bleach and ammonia-based cleaners in separate cupboards, so that if there is a spill the products won't get mixed and release poisonous gas.
- Store products in their original containers.
- Make sure labels can be read and won't come off the container.
- Tightly seal containers and check them often to make sure they are not breaking down. If you notice a container is rusting or leaking, put it inside a larger container and label it clearly.

What is the best way to dispose of household hazardous waste?

The best way to dispose of household hazardous waste is to take it to a community household hazardous waste collection center in your area.

You should never pour unused hazardous household products down the drain. That is illegal in California. It is also illegal to pour used oil and paints on land, down drains, including the storm drains, or to burn them. Waste motor oil, oil filters, antifreeze, and used batteries can be recycled. You should take them to a recycling center or a household hazardous waste collection center. For information about recycling specific products or about household hazardous waste collection programs in your community, call 1-800-CLEANUP or visit the

Department of Resources Recycling and Recovery (CalRecycle) Web site at <http://www.calrecycle.ca.gov/>. You can get additional information on household hazardous waste at www.earth911.org.

Hotlines:

For information on household hazardous waste and used oil collection and recycling centers, information on buying recycled products, the 3 R's - Reduce, Reuse and Recycle, and other environmental tips and events, contact the California Environmental Hotline at:

Telephone: 1-800-CLEANUP (1-800-253-2687)

Web Site: www.1800cleanup.org

*For information on recycling and collection centers and referrals for county and city agencies, call the California Integrated Waste Management Board at:
Telephone: (800) 553-2962*

*To report hazardous waste violations, call the California Department of Toxic Substances Control Waste Alert hotline at:
Telephone: (800)-69TOXIC [(800) 698-6942]*

*For general information on hazardous wastes, call the California Department of Toxic Substances Control at:
Telephone: (800) 61TOXIC [(800) 618-6942]*

Publications:

Household Products Management Wheel

This product is available for \$4.95 from:
Environmental Hazards Management
Institute 10 New Market Road
P.O. Box 932
Durham, NH 03824
Telephone: (603) 868-1496
FAX: (603) 868-1547

Note: Telephone numbers and prices were correct at the date of publication of this booklet, but are subject to change.

CHAPTER VI LEAD

How is lead harmful?

Lead is a common environmental toxin that has been used extensively in consumer products such as paint and gasoline. Much of that lead remains in the California environment where people may be exposed to it. Children under the age of six years are particularly at risk. They typically are exposed to lead through the normal hand-to-mouth behavior that occurs as they explore their environment. Crawling or playing on the floor, and putting their fingers, toys, and other items in their mouths can expose a child to lead. Lead poisoning, which is often unrecognized, can result in health effects that are often irreversible, including brain damage, mental retardation, convulsions, and even death. If lead poisoning goes undetected, it may result in behavior problems, reduced intelligence, anemia, and serious liver or kidney damage.

Lead is also harmful to adults. Lead poisoning can cause reproductive problems in both men and women, high blood pressure, kidney disease, digestive problems, nerve disorders, memory and concentration problems, and muscle and joint pain. Adult lead poisoning is most often the result of occupational exposure, or exposure following unsafe home renovation. If a pregnant woman is lead poisoned, the lead can pass into her baby's blood and poison the baby.

How can I find out if my family has lead poisoning?

The most important step you can take to protect your children is to prevent them from being exposed to lead. Most lead poisoning does not cause acute symptoms, so the only way to know if a person is lead poisoned is by testing the level of lead in his or her blood.

There are many ways a child can be exposed to lead. The law assumes that, at minimum, children are at risk if they are on publicly funded programs for low-income children or if they live in, or spend a lot of time in, a place built before 1978 that has peeling or chipped paint, or that has been recently renovated. These children must be tested for lead at age one and two years. Children below the age of six years, who were not tested at ages one or two, should receive make-up testing as soon as possible. If you have a job or a hobby where you may be exposed to lead, you should be tested regularly. If you are pregnant, ask your doctor about a lead test.

A physician can order this simple test. Some doctors and healthcare centers can perform the test in their offices. Under California law, it must be covered by health insurance plans. Children from families with modest incomes can be tested at no cost through the Child Health and Disability Prevention Program (CHDP). The test is a required part of well-child checkups. For more information on CHDP and to locate an office in your area visit their Web site at www.dhs.ca.gov/pcfh/cms/chdp.

Because lead poisoning is the result of contact with lead, the primary treatment is to identify the source of lead, and remove or isolate it. Further medical management may be necessary, depending on factors such as the severity and duration of exposure. Adults and children who become lead poisoned will need regular testing to monitor levels of lead in the body.

Where is lead found in the home?

Many houses and apartments built before 1978 have paint that contains lead. In 1978, the Consumer Product Safety Commission banned paint containing high levels of lead for residential use. If your home or apartment was built before 1978, you should assume it has lead paint.

Lead-based paint that is peeling, chipping, chalking, or cracking is a hazard and needs immediate attention. Lead-based paint may also pose a hazard on surfaces children can chew or in areas with heavy wear. These areas include windows, windowsills, doors and doorframes, stairs, railings, banisters, porches, and fences. When painted surfaces bump or rub together, they generate lead dust. Likewise, dry-scraping, sanding, or heating lead paint during repainting or remodeling also creates large amounts of lead dust. This dust can poison your family.

Soil may be contaminated with lead from leaded gasoline emissions and from deteriorating exterior paint. Lead in soil can be a hazard to children who play in the bare soil. It can also contaminate the home and floor dust when people track soil into the house on their shoes.

Other Sources: Lead can be found in jobs such as battery repair or recycling, radiator repair, painting or remodeling, and lead smelting. Lead from the workplace poses a hazard for workers' families. Workers can bring lead into their homes on their work clothes, shoes, and bodies without knowing it. Some hobbies also use lead. These include ceramics, stained glass, fishing weights, and bullet casting or firing. Lead can leach into food cooked, stored, or served in some imported dishes or handmade pottery. Some traditional remedies such as Azarcon, Greta, Pay-loo-ah, Surma, Kohl, and Kandou contain large amounts of lead and present a serious danger. Imported candy, especially chili or tamarind candy or its packaging, is frequently lead contaminated. Lead has been found in painted toys and inexpensive costume jewelry, particularly imported items. Older water systems may have pipes containing lead or pipes with lead solder.

How can I check my home for lead hazards?

To inspect your home for lead hazards, hire an individual who has been certified by the California Department of Public Health (CDPH). CDPH certification is now required for all those doing lead hazard evaluations, lead abatement plan preparation, lead abatement work and lead clearance inspections for residential and public buildings in California ([Title 17, CCR § 35001-35050 and § 36000-36100](#)). A CDPH-certified

inspector/assessor can determine the lead content of painted surfaces in your home and identify sources of lead exposure such as peeling paint, lead contaminated soil, or lead-contaminated dust. The assessment should outline the actions to take to address these hazards.

A CDPH-certified inspector/assessor may use a variety of methods to assess lead hazards in your home. These include visual inspection of paint condition; laboratory tests of paint, dust and soil samples; and a portable x-ray fluorescence lead testing (XRF) machine.

You may have seen home lead test kits in your local hardware store. Recent studies suggest, however, that they are not accurate for testing paint, soil, or dust. They may be used, however, to test pottery and ceramics for the presence of lead.

How can I reduce lead hazards safely?

If your house has lead hazards, you can take action to reduce your family's risk. Most importantly, if you have young children, be sure they receive a blood lead test. This is particularly critical if you live in a unit that has been recently renovated or have remodeled your home.

Second, keep your home as clean and free of dust and deteriorated paint chips as possible. Clean floors, window frames, windowsills, and other horizontal surfaces weekly. Use a mop, sponge, or disposable cloths with a solution of water and an all-purpose cleaner. Rinse out mops and sponges thoroughly after use. Use doormats or remove shoes before entering your home to avoid tracking in lead from bare soil. Have children play in grassy or landscaped areas instead of bare soil.

Wash children's hands often, especially before meals and bedtime. Keep play areas clean. Wash bottles, pacifiers, toys, and stuffed animals regularly. Feed your children nutritious meals that include foods high in iron and calcium. Give children regular meals and snacks. Children with full stomachs and nutritious diets tend to absorb less lead.

How can I significantly reduce lead hazards?

In addition to regular cleaning and good nutrition, you can **temporarily** reduce lead hazards by repairing damaged painted surfaces and planting grass or using landscaping materials to cover soil with high lead levels. These actions are not permanent solutions and need ongoing attention.

To **permanently** remove lead hazards, you should hire a lead abatement contractor. Abatement methods include removing, sealing, or enclosing lead-based paint with special materials. Simply painting over lead-based paint with regular paint is not a permanent solution. Hire an individual who has been certified by the CDPH as a Supervisor. CDPH-certified Supervisors and Workers have the proper training to do this

work safely. They have the proper equipment to clean up thoroughly. They will also follow strict safety rules set by the state and federal governments.

What precautions should I take when remodeling my home?

Before you begin any remodeling or renovations that will disturb painted surfaces, (such as scraping or sanding paint, or tearing out walls) test the area for lead-based paint. To fully protect your family from unsafe renovation hazards, hire a CDPH-certified Supervisor.

Never use a dry scraper, belt-sander, propane torch, or heat gun to remove lead-based paint. These actions create large amounts of poisonous lead dust and fumes. This lead dust can remain in your home long after the work is done, and can make your family very sick. It is important to move your family (especially children and pregnant women) out of the home until the work is completed and the area has been properly cleaned.

You can find out about other safety measures by calling (800) 424-LEAD [(800) 424-5323]. Ask for the brochure "Reducing Lead Hazards when Remodeling Your Home." This brochure explains what to do before, during, and after renovations.

What is the source of lead in water?

The source of lead in water is most likely to be lead in water pipes, lead solder used on copper pipes, and some brass plumbing fixtures. Lead pipes are generally found only in homes built before 1930. The use of lead-based solder in plumbing applications in homes and buildings was banned in 1988. However, many homes built prior to 1988 may contain plumbing systems that use lead solder. The levels of lead in water from these homes are likely to be highest during the first five years after construction. After five years there can be sufficient mineral deposit, except where the water is soft, to form a coating inside the pipe; this coating prevents the lead from dissolving. However, recently, new chemical agents being used in some water systems have been associated with increased corrosion and have resulted in increased levels of lead in water.

How can lead levels in water be determined?

If you suspect lead contamination in drinking water, you may submit water samples to a laboratory certified by the CDPH. For a list of certified laboratories, see Publications at the end of this chapter. Consult with the laboratory on the proper procedures for sample taking. Information on the possibility of lead contamination in your municipal water supply may be obtained from the water utility serving your area.

How can levels of lead in water be reduced?

Lead levels in water can be reduced by removing lead piping or lead solder, by installing a home treatment system certified by the CDPH, or regularly flushing each tap before consuming the water. Another alternative for homeowners is to purchase bottled water. A detailed discussion of home treatment systems is presented in, "Consumers Guide to California Drinking Water" (see Publications).

Where there are elevated lead levels in water, homeowners who choose not to install a treatment system, or use bottled drinking water, should flush each tap before the water is consumed. Water which has been standing in the water pipes for more than six hours should be flushed from the tap until the temperature changes, and then, for about 15 seconds more. Because lead is more soluble in hot water, the homeowner should not drink or prepare food using hot water from the tap. The flushed water should be saved and used for other purposes, such as washing clothes or watering plants.

What are my responsibilities if I am selling, renting, or remodeling a home built before 1978?

If you are planning to buy, rent, or renovate a home built before 1978, federal law requires sellers, landlords, and remodelers to disclose certain information prior to finalizing contracts.

Landlords must:

- Disclose known information on lead-based paint hazards.
- Give you a lead hazard pamphlet before leases take effect. Leases must also include a federal form about lead-based paint.

Sellers must:

- Disclose known information on lead-based paint hazards.
- Give you a lead hazard pamphlet before selling a house. Sales contracts must also include a federal form about lead-based paint. Buyers have up to 10 days to check for lead hazards.

Renovators must:

- Give you a lead hazard pamphlet before starting to work.

If you want more information on these requirements, call the National Lead Information Clearinghouse at (800) 424-LEAD [(800) 424-5323].

Hotlines:

*For more information on lead in drinking water and information on federal regulations about lead in drinking water, contact the U.S. EPA Safe Drinking Water Hotline in Washington, D.C. at:
Telephone: (800) 426-4791*

For information on how to protect children from lead poisoning, contact The National Lead Information Center at:

Telephone: (800) Lead-FYI [(800) 532-3394]

For other information on lead hazards, call The National Lead Information Center Clearinghouse at:

Telephone: (800) 424-LEAD [(800) 424-5323]

To request information on lead in consumer products, or to report an unsafe consumer product or a product-related injury, contact the Consumer Product Safety Commission at:

Telephone: (800) 638-2772

To request local lists of CDPH-certified inspectors or abatement workers, contact the Lead-related Construction Hotline at:

Telephone: (800) 597-LEAD [(800) 597-5323] or visit the CDPH Web site at www.cdph.ca.gov

To obtain additional information on lead poisoning, or a list of local county lead programs, contact the CDPH Childhood Lead Poisoning Prevention Branch at:

Telephone: (510) 620-5600 or visit the CDPH Web site at www.cdph.ca.gov/programs/CLPPB.

Publications:

List of Certified Laboratories to Perform Hazardous Waste Analysis

This free list is available from:

California Department of Health Services
Environmental Laboratory Accreditation Program
850 Marina Bay Parkway, Ste. G365/EHL
Richmond, CA 94804

Telephone: (510) 620-2800

Web: www.cdph.ca.gov/certlic/labs/Documents/ELAPLablist.xls

Guidelines for the Evaluation and Control of Lead-Based Paint Hazards in Housing

This publication is available for \$45.00 from:

Department of Housing and Urban Development (HUD)
Information Services, HUD User
P.O. Box 6091

Rockville, MD 20849

Telephone: (800) 245-2691

Web: www.huduser.org

Lead in your Drinking Water

This publication is available from:

U.S. Environmental Protection Agency
Public Information Center
1200 Pennsylvania Ave., N.W.
Washington, D.C. 20460
Telephone: (202) 272-0167

The Inside Story - A Guide to Indoor Air Quality

This free publication is available from:
Indoor Air Quality Information Clearinghouse
P.O. Box 37133
Washington, D.C. 20013-7133
Telephone: (800) 438-4318
Web: www.epa.gov/iaq/

Consumers Guide to California Drinking Water

This publication is available for \$4.00 (plus 5 percent shipping charge, and tax) from:
Local Government Commission
1414 K Street, Suite #250
Sacramento, CA 95814
Telephone: (916) 448-1198 x 307
Web: www.lgc.org

Lead Poisoning Prevention Wheel

This publication is available for \$3.95 from:
Environmental Hazards Management Institute
10 New Market Road
P.O. Box 932
Durham, NH 03824
Telephone: (603) 868-1496

Note: Telephone numbers and prices were correct at the date of publication of this booklet, but are subject to change.

CHAPTER VII MOLD

What are molds?

Molds are simple, microscopic organisms present virtually everywhere, indoors and outdoors. Molds, along with mushrooms and yeasts, are fungi and are needed to break down dead material and recycle nutrients in the environment.

For molds to grow and reproduce, they need only a food source – any organic material, such as leaves, wood, paper, or dirt – and moisture. Because molds grow by digesting organic material, they gradually destroy whatever they grow on. Sometimes, new molds grow on old mold colonies. Mold growth on surfaces can often be seen in the form of discoloration, frequently green, gray, brown, or black but also white and other colors. Molds release countless tiny, lightweight spores, which travel easily through the air.

How am I exposed to indoor molds?

Everyone is exposed to some mold on a daily basis without evident harm. There are usually mold spores in the air inside homes. Most indoor mold spores come from outdoors by blowing through open windows or being tracked into homes as dust on shoes. Mold spores primarily cause health problems when they are present in large numbers and people inhale high concentrations of spores in air. This can occur when there is active mold growth in a home, office, or school where people live or work. People can also be exposed to mold by touching moldy materials and by eating contaminated foods. Molds will grow and multiply whenever conditions are right, that is when sufficient moisture is available and organic material is present. The most important factor allowing mold to grow is dampness or moisture accumulation in the home. The following are common sources of indoor moisture that may lead to mold problems:

- Flooding
- Leaky roofs
- Sprinkler spray hitting the house
- Plumbing leaks
- Overflow from sinks, showers, bathtubs, or sewers
- Damp basement or crawl space
- Steam from bathing, doing laundry, or cooking
- Humidifier use
- Wet clothes drying indoors or clothes dryers exhausting hot, humid air indoors

Warping floors and discoloration of walls and ceilings can be indications of moisture problems. Condensation on windows or walls is also an important indication, but it can sometimes be caused by an indoor combustion problem. Have fuel-burning appliances routinely inspected by your local utility or a professional heating contractor.

Should I be concerned about mold in my home?

Yes, if indoor mold growth is extensive, it can cause very high and persistent airborne spore exposures. Persons exposed to high spore levels can become sensitized and develop allergies to the mold or other health problems. Mold growth can also damage your furnishings, such as carpets, sofas, and cabinets. Clothes and shoes in damp closets can become soiled. In time, unchecked mold growth can cause serious damage to the structure of your home.

What symptoms are commonly seen with mold exposure?

Exposure to large amounts of mold can cause health effects through inflammation, allergic response, or, rarely, infection. Allergic reactions, often referred to as hay fever, are the most common health problems reported following mold exposure. Typical symptoms that mold-exposed persons report, alone or in combination, include:

- Breathing problems, such as wheezing, difficulty breathing, and shortness of breath
- Nose or sinus congestion (stuffy feeling, sinus headache)
- Eye irritation (burning, watery, or reddened eyes)
- Dry, hacking cough
- Nose or throat irritation (runny nose, sneezing, sore throat)
- Skin rashes or red, itchy skin

Headaches, memory problems, mood swings, nosebleeds, body aches and pains, and fevers are occasionally reported in mold cases, but their cause is not understood.

How much mold can make me sick?

For some people, encountering even a relatively small number of mold spores can trigger an asthma attack or lead to other health problems. For other persons, symptoms may occur only when exposure levels are much higher. Nonetheless, indoor mold growth is unsanitary and undesirable. Basically, if you can see or smell mold inside your home, take steps to identify and eliminate the excess moisture and to cleanup and remove the mold.

Are some molds more hazardous than others?

Allergic persons have different levels of sensitivity to molds, both as to the amount and the types that cause them to feel ill. In addition to being able to cause allergies, certain types of molds, such as *Stachybotrys chartarum*, may produce compounds that have toxic properties, which are called mycotoxins. Mycotoxins are not always produced, and whether a mold produces mycotoxins while growing in a building depends on what the mold is growing on as well as environmental conditions such as temperature, humidity, and other unknown factors. When mycotoxins are present, they occur in both living and

dead mold spores and may be present in materials into which mold has grown. While *Stachybotrys chartarum* and some other types of molds are growing, a wet slime layer covers the spores, preventing them from becoming airborne. However, when the mold dies and dries up, air currents or physical handling can cause spores to become airborne.

At present there is no readily available, inexpensive test to determine if a mold growing in a building is producing toxins. A limited number of specialized laboratories can test for mycotoxins in dust or building materials such as gypsum wallboard. These tests are very expensive and the results are not helpful in determining if there is an additional health risk from mycotoxins. There are also no blood or urine tests that a physician can use to determine if an individual has been exposed to the spores of a toxin-producing fungus or its mycotoxins.

How can I tell if I have mold in my house?

You may suspect that you have mold if you see discolored patches or cottony or speckled growth on walls or furniture or if you smell an earthy or musty odor. You also may suspect mold contamination if mold-allergic individuals experience some of the symptoms listed earlier when in the house. Evidence of past or ongoing water damage should also trigger a more thorough inspection. You may find mold growth underneath water-damaged surfaces or behind walls, floors, or ceilings.

Should I test my home for mold?

The California Department of Public Health (CDPH) does not recommend testing as a first step to determine if you have a mold problem. Reliable air testing for mold can be expensive and requires experience and equipment that is not available to most people. Owners of individual private homes and apartments generally will need to pay a contractor to do such testing, because insurance companies and public health agencies seldom provide this service. Mold inspection and cleanup is usually considered a housekeeping task that is the responsibility of the homeowner or landlord, as are roof and plumbing repairs, house cleaning, and yard maintenance.

Another reason the CDPH does not recommend testing for mold is that there are few available standards for judging what is an acceptable amount of mold. In all locations, there is some level of airborne mold outdoors. If air testing is carried out in a home, an outdoor air sample also must be collected at the same time, to allow comparison of indoor and outdoor spore types and numbers. Because some people are much more sensitive to mold spores than are other people, mold testing is at best a general guide. The simplest way to deal with a suspicion of mold contamination is, if you can see or smell mold, you likely have a problem and should take the steps outlined below. Mold growth is likely to recur unless the source of moisture that is allowing mold to grow is removed and the contaminated area is cleaned.

Assessing the Size of a Mold Contamination Problem

There will be a significant difference in the cleaning recommendations for a small mold problem – total area of visible mold growth is less than 10 square feet – and a large mold problem – more than 100 square feet. In the case of a relatively small area, the homeowner using personal protective equipment, such as a dust mask, safety goggles, and household gloves, can handle the cleanup. However, for larger areas, choose an experienced, professional contractor.

General Cleanup Procedures

- Find and remove sources of moisture
- Find and determine the extent and area of visible mold growth
- Clean and dry moldy areas – do not allow dust from the moldy areas to get into the rest of the home
- Bag and dispose of all material that may have moldy residues, such as rags, paper, leaves, and debris

Clean up should begin after the moisture source is fixed and excess water has been removed. Wear gloves when handling moldy materials. **Spores are more easily released when moldy materials dry out, so it is advisable to remove moldy items as soon as possible.** Detailed cleanup procedures are available in the California Department of Health Services Indoor Air Quality Section fact sheet entitled, “Mold in My Home: What Do I Do?” It is available on the Internet at www.cdph.ca.gov/programs/IAQ/Documents/MIMH_2006-06_2009-03rev6p.doc or by calling (510) 620-2874.

How can I prevent indoor mold problems in my home?

Inspect your home regularly for signs and sources of indoor moisture and mold. Take steps to eliminate sources of water as quickly as possible. If a leak or flooding occurs, it is essential to act quickly so that wet materials can dry within 48 hours:

- Stop the source of the leak or flooding.
- Remove excess water with mops or wet vacuum.
- Move wet items to a dry, well-ventilated area. Move rugs and pull up wet carpet as soon as possible.
- Open closet and cabinet doors and move furniture away from walls to increase circulation.
- Run portable fans to increase air circulation. Do NOT use the home’s central blower if flooding has occurred in it or in any of the ducts. Do NOT use fans if mold may have already started to grow, or if it has been more than 48 hours since the flooding.
- Run dehumidifiers and window air conditioners to lower humidity.
- Do NOT turn up the heat or use heaters in confined areas, as higher temperatures may increase the rate of mold growth.

- If water has soaked inside the walls, it may be necessary to open wall cavities by removing the baseboards and drilling a hole through the bottom of the wet wall, or by prying away wall paneling.

Publications:

Mold in My Home: What Do I Do?

This free document is available from:
California Department of Public Health
Indoor Air Quality Section
850 Marina Bay Parkway, G365 EHLB
Richmond, CA 94804
Telephone: (510) 620-2874

Web: www.cdph.ca.gov/programs/IAQ/Documents/MIMH_2006-06_2009-03rev6p.doc

Numerous mold-related articles

and documents are available from:

California Department of Public Health
Environmental Health Investigation Branch
850 Marina Bay Parkway
Building P, 3rd floor
Richmond, CA 94804-6403

Web: www.ehib.org/search.jsp?ss=mold&google=on

***Mold Remediation in Schools and Commercial Buildings
A Brief Guide to Mold, Moisture, and Your Home***

These free documents are available from:

U.S. Environmental Protection Agency
IAQ Information Clearinghouse
Telephone: (800) 438-4318

Web: www.epa.gov/mold/moldresources.html

Repairing Your Flooded Home

This free publication is available from:

American Red Cross
8928 Volunteer Lane, Sacramento, CA 95826
Telephone: (916) 368-3131

Web: www.redcross.org

For local assistance, contact your county or city Department of Health, Housing, or Environmental Health. Phone numbers for these agencies are located in the blue government pages at the front of your local telephone directory.

Note: Telephone numbers and prices were correct at the date of publication of this booklet, but are subject to change.

CHAPTER VIII RADON

What is radon?

Radon is a naturally occurring colorless, tasteless, and odorless radioactive gas that comes from the decay of uranium found in nearly all soils. It enters buildings from the ground through cracks and openings in concrete slabs, crawl spaces, floor drains, sumps, and the many tiny pores in hollow-wall concrete blocks. When the pressure within a home is lowered, more radon can be drawn from the soil and enter the home. Indoor air pressure may be lower during colder months when heated air rises from the floor level to the ceiling or second story level in the house. Indoor pressure may also be lowered in tightly sealed houses through use of exhaust fans such as those in many kitchens and bathrooms.

Once inside a building, radon can become trapped. Unless the building is properly ventilated to remove it, the gas can become a health hazard.

Where is radon found?

Radon is typically present in rocks containing uranium such as certain granites and shales. The amount of radon that can enter soils and groundwater depends on the concentrations of uranium in the underlying rock. Radon can also be found in the air at very low concentrations.

If radon is present in tap water, it can be released when water is used indoors for showering, washing dishes, or washing clothes. Radon is of most concern when water is obtained directly from a well that draws water from a source exposed to uranium and radium. Most of the radon in water obtained from a surface source, such as a reservoir or well water stored in an open tank, has been released before it reaches the home. Building materials are not a significant source of radon except where they incorporate rocks rich in radium or uranium such as granite and shales.

Why is radon harmful?

Long-term exposure to elevated levels of radon can increase your risk of getting lung cancer. Tobacco smokers are at an even greater risk. Radon levels vary throughout the country. The amount of radon entering homes varies from home to home. Because radon is colorless, odorless, and tasteless, testing is the only way to find out if you and your family are at risk from it.

Exposure to radon does not result in any immediate symptoms. For example, it does not result in acute respiratory effects such as colds or allergies. Any cancer resulting from inhaling radon is not likely to arise for at least 20-30 years after exposure begins, and both the level of exposure and duration of exposure are factors which determine the risk of developing lung cancer.

Where are the highest levels of radon in the home?

Generally, the living area closest to the soil surface has the highest level of radon. Upper stories have lower levels of radon. Consequently, radon is rarely a concern in high rise apartment buildings, other than at ground level.

Do adjacent houses have similar levels of radon?

Because the amount of uranium and radium in the soil varies, and because houses are constructed and used in different ways, houses in the same neighborhood will have different radon levels.

Is there a safe level of radon?

We know that the greater the exposure to radon, the greater the risk of developing lung cancer. But we do not know if there is a radon level that is harmless. Both the duration of exposure and the level of radon in the air are important in determining the risk of developing lung cancer. Smoking may be a large contributing factor to lung disease associated with radon exposure. Currently, the California Department of Public Health (CDPH) **recommends that you take action to reduce radon levels in your house if the annual average indoor air concentration exceeds 4 picocuries per liter (pCi/L).**

How can radon levels be measured?

Several types of passive radon detectors or active devices can measure the level of radon in a house. Passive detectors are devices left in place for a period of time that require no ongoing activity or power. To obtain accurate results, the homeowner should carefully follow the manufacturer's instructions. Although short-term measurements of radon levels are more convenient, health risk can be more accurately determined from measurements made over a year. Active devices require a source of power and are used by professional radon testers to monitor radon levels. These devices are usually used during real estate transactions.

Where can I get a radon detector?

The CDPH Radon Program is now offering short term test kits for \$7.00 for California residents. CDPH has contracted with Alpha Energy Laboratories ([DrHomeAir](http://DrHomeAir.com)) to provide this service. The test kit can be ordered on-line at www.drhomeair.com/ . The CDPH Radon Program maintains lists of currently certified testers, mitigators and laboratories at www.cdph.ca.gov/HealthInfo/environhealth/Pages/RadonServiceProviders.aspx This list of certified radon providers can also be obtained by calling the CDPH Radon Program Hotline at (800) 745-7236.

What must be done to reduce indoor radon levels?

The U.S. EPA and CDPH recommend that homeowners attempt to reduce radon levels in any home that has an annual average level of radon at or above 4 pCi/L. The mitigation method chosen will depend on the construction of the house, extent of radon reduction required, and cost. After installing a mitigation system, we recommend that radon levels be monitored at regular intervals to make sure the mitigation is working.

A qualified contractor should install the radon mitigation system unless the homeowner fully understands the principles of the mitigation system.

When should water be tested for radon?

When a test shows that indoor levels of radon are at or above 4 picocuries per liter, homeowners should also consider a water test. If the water comes from a water system, information about the source of the water and any radon tests done on it can be obtained from the company supplying the water. For information or assistance with interpreting test results, contact the CDPH Division of Drinking Water and Environmental Management (see Appendix A) at www.cdph.ca.gov/programs/Pages/DDWEM.aspx.

The radon concentration of water from a private well can be measured by having a sample analyzed at a laboratory certified to test for radon in water. Homeowners should consult the CDPH radon program at (916) 449-5674 for guidance on the type of water analysis appropriate to the area and well type. The method of sample collection is critical. To get a list of certified laboratories, call the CDPH at (800) 745-7236 or visit their website at www.cdph.ca.gov/HealthInfo/environhealth/Pages/RadonServiceProviders.aspx.

How can levels of radon in water be reduced?

Radon levels in water can be reduced by 99 percent by the installation of a granular activated carbon unit (GAC) on the water line entering the house. GAC units should be certified by the CDPH. As radon accumulates and decays in the GAC unit, the unit itself becomes radioactive. Therefore, these units must be shielded or located away from the house to protect occupants from radiation. The GAC filters also require special handling during replacement and disposal. Aeration may also remove radon from water. This technique may be more costly but avoids the problem of radiation build up. Selection of the proper water treatment technology depends primarily upon its removal efficiency (other contaminants in the water may adversely affect this), safety, initial costs, and operating and maintenance costs. Therefore, professional guidance is strongly advised.

Does the law require mitigation?

Mitigation of radon is not required by law and is at the discretion of the homeowner.

Hotlines:

For information on how to purchase a radon detector, how to find someone to test your home, or for informational publications on radon, call the CDPH Radon Program Hotline at: (800) 745-7236 or visit their website at

www.cdph.ca.gov/HealthInfo/environhealth/Pages/Radon.aspx

For specific assistance, call the CDPH Radon Program at: (916) 449-5674

Publications:

List of Certified Providers of Radon Services

This publication is available by calling CDPH Radon Program Hotline at (800) 745-745-7236 or at

www.cdph.ca.gov/HealthInfo/environhealth/Pages/RadonServiceProviders.aspx

California Department of Public Health

Indoor Radon Program

1616 Capitol Avenue, 2nd Floor

P.O. Box 997413

Sacramento, CA 95899-7413

Telephone: (800) 745-7236

Web: www.cdph.ca.gov/HealthInfo/environhealth/Pages/Radon.aspx

Radon in California

A Citizen's Guide to Radon

Homebuyers and Sellers Guide to Radon

The Inside Story - A Guide to Indoor Air Quality

How to Reduce Radon Levels in your Home

Model Standards for Radon in New Residential Buildings

These free publications are available from:

U.S. EPA Indoor Air Quality Information Clearinghouse

P.O. Box 37133

Washington, D.C. 20013-7133

Telephone: (800) 438-4318

Fax: (202) 484-1510

Email: iaqinfo@aol.com

Web: www.epa.gov/iaq/

Note: Telephone numbers and prices were correct at the date of publication of this booklet, but are subject to change.

Federal Agencies

**U.S. Department of Housing and Urban Development
(HUD)**

Office of Lead Hazard Control
451 7th Street S.W., Room B133
Washington, D.C. 20410
Telephone: (202) 755-1785
Web: www.hud.gov
HUD helps people build and maintain communities of opportunity.

U.S. Environmental Protection Agency (U.S. EPA)

Public Information Center
1200 Pennsylvania Ave., N.W.
Washington, D.C. 20460
Telephone: (202) 272-0167
Web: www.epa.gov
The U.S. EPA is a regulatory agency responsible for implementing federal laws designed to protect our air, water, and land from past and future environmental hazards.

State Agencies

California Air Resources Board

Research Division
Indoor Exposure Assessment Section
1001 I Street
P.O. Box 2815
Sacramento, CA 95814
Telephone: (916) 322-8282
Web: www.arb.ca.gov

California Contractor's State License Board

9821 Business Park Drive
P.O. Box 26000
Sacramento, CA 95827
Telephone: (800) 321-2752
Web: www.contractorslicense.com
This board is responsible for licensing contractors, including asbestos abatement.

California Department of Industrial Relations

Division of Occupational Safety and Health (Cal/OSHA)
Asbestos Consultant Certification Unit
2211 Park Towne Circle, #1
Sacramento, CA 95825
Telephone: (916) 574-2993
Web: www.dir.ca.gov
Cal/OSHA is the state equivalent to the Federal Occupational

Safety and Health Administration (OSHA) and regulates protection of workers.

California Department of Public Health

Call your local county health department listed in the front of the white pages or, on the Internet, visit www.cdph.ca.gov

California Department of Public Health

Environmental Management Branch, Radon Program

1616 Capital Avenue, 2nd Floor, MS 7405

P.O. Box 997413

Sacramento, CA 95899-7413

Telephone: (800) 745-7236

Web: www.cdph.ca.gov/HealthInfo/environhealth/Pages/Radon.aspx

This branch provides publications and information about radon hazards.

California Department of Public Health

Environmental Lab Accreditation Program

850 Marina Bay Parkway

Building P, Third Floor

Richmond, CA 94804-6403

Telephone: (510) 620-5600

APPENDIX A List of Federal and State Agencies

Contact information provided was correct as of the date of publication, but is subject to change.

This office may provide information about test procedures for analyzing environmental pollutants.

California Department of Public Health

Division of Drinking Water and Environmental Management

Drinking Water Technical Program Branch

Sacramento Headquarters

1616 Capital Avenue, MS 7400

P.O. Box 997413

Sacramento, CA 95899-7413

Telephone: (916) 449-5600

This division collects and evaluates water quality information on drinking water in California and supervises the activities of all public water systems. It also provides assistance to local health departments, water purveyors, and the general public on issues related to water quality, water supply, and water treatment:

Northern California Section

Sacramento District

8455 Jackson Road, Room 120

Sacramento, CA 95826

Telephone: (916) 229-3126

Lassen, Valley, Klamath & Shasta Districts

415 Knollcrest Drive, Suite 110

Redding, CA 96002

Telephone: (916) 224-4800

North Coastal Section

San Francisco & Santa Clara Districts

2151 Berkeley Way, Room 458

Berkeley, CA 94704

Telephone: (510) 540-2158

Mendocino & Sonoma Districts

50 D Street, Suite 200

Santa Rosa, CA 95404-4752

Telephone: (707) 576-2145
Monterey District
1 Lower Ragsdale, Bldg. 1, Suite 120
Monterey, CA 93940
Telephone: (831) 655-6939

Central California Section
Merced & Visalia Districts
1040 East Herndon Avenue, Suite 205
Fresno, CA 93720-3158
Telephone: (559) 447-3300

Stockton District
31 E. Channel Street, Room 270
Stockton, CA 95202
Telephone: (209) 948-7696

Tehachapi District
1200 Discovery Drive, Suite 100
Bakersfield, CA 993309
Telephone: (661) 335-7315

Southern California Section
Los Angeles District & Metropolitan Districts
1449 W. Temple Street, Room 202
Los Angeles, CA 90026
Telephone: (213) 580-5723

Santa Barbara District
1180 Eugenia Place, Suite 200
Carpinteria, CA 93013
Telephone: (805) 566-1326

South Coastal Section
San Bernardino District
464 West 4th Street, #437
San Bernardino, CA 92401
Telephone: (909) 383-4328

San Diego & Riverside Districts
1350 Front Street, Room 2050
San Diego, CA 92101
Telephone: (619) 525-4159

Santa Ana District
28 Civic Center Plaza, Room 325

Santa Ana, CA 92701
Telephone: (714) 558-4410California

**Department of Toxic Substances
Control**

1001 I Street
P.O. Box 806
Sacramento, CA 95812-0806
Telephone: (916) 324-1826
Web: www.dtsc.ca.gov

DTSC issues permits for treatment, storage, and disposal of hazardous wastes; inspects facilities; maintains a Superfund list; and has a site cleanup program.

Northern California Regional Offices

Sacramento Office
8800 Cal Center Drive
Sacramento, CA 95826-3268
Telephone: (916) 255-3618

Clovis Office
1515 Tollhouse Road
Clovis, CA 93611-0522
Telephone: (559) 297-3901

Berkeley Office
700 Heinz Avenue, Suite #200
Berkeley, CA 94710-2721
Telephone: (510) 540-2122

Southern California Regional Offices

Chatsworth Office
9211 Oakdale Avenue
Chatsworth, CA 91311-6505
Phone: (818) 717-6500

Cypress Office
5796 Corporate Avenue
Cypress, CA 90630-4732
Telephone: (714) 484-5300

San Diego Office
9174 Skypark Court, Suite 150
San Diego, CA 92123
Telephone: (858) 637-5531

**California Department of Housing and Community
Development**

Division of Administration - Manufactured Housing
1800 Third Street, Room 260

P.O. Box 31
Sacramento, CA 95814
Telephone: (916) 445-3338
Administration of codes and statutes relating to mobile homes. It also allocates grants and loans for low-income housing, house rehabilitation, and disaster relief.

California Department of Real Estate (DRE)

Fresno District Office
Department of Real Estate
2550 Mariposa, Room 3070
Fresno, CA 93721-2273
Telephone: (559) 445-6153

Oakland District Office
Department of Real Estate
1515 Clay Street, Room 702
Oakland, CA 94612-1462
Telephone: (510) 622-2552

Los Angeles Executive Office
Department of Real Estate
320 W. 4th Street, Suite 350
Los Angeles, CA 90013-1150
Telephone: (213) 620-2072

San Diego District Office
Department of Real Estate
1350 Front Street, Room 3064
San Diego, CA 92101-3687
Telephone: (619) 525-4375

Sacramento Principal Office
Department of Real Estate
2201 Broadway
P.O. Box 187000
Sacramento, CA 95818-7000
Telephone: (916) 227-0864
This unit provides information on lead toxicity and treatment of lead toxicity in children.

APPENDIX B Glossary

AERATION: A technique by which air is introduced into a liquid; bubbles and aerosols are generated and dissolved gases released. For example, water aerated by passing through a shower head will release dissolved radon gas.

ACTIVATED CARBON: A material made from burnt wood which is used to remove organic solutes, such as pesticides, and some inorganic solutes, such as chlorine, from water. Dissolved organic solutes are removed from the water by absorption onto the activated carbon. The activated carbon must be periodically replaced when it becomes saturated and unable to adsorb any more solute. Activated carbon is not effective in removing heavy metals, such as lead, and salts, which make water hard.

ANNUAL AVERAGE LEVEL: The average of measurements taken at different times over the period of one year or the level measured by a device left in place for a full year.

CARCINOGEN: A substance that causes cancer.

CATHODE RAY TUBE: The cathode ray tube, or CRT, is the display device used in most computer displays, video monitors, and televisions.

CERTIFIED LABORATORY: A laboratory that has demonstrated that it can meet the federal and state standards for accuracy and precision for a given analytical procedure.

DISTILLATION: As referenced in this booklet, distillation is a technique used to purify water by removal of inorganic contaminants such as salts through heating the solution and condensing the steam. The resultant distilled water has a reduced salt concentration. Distillation is not effective in removing pesticides and volatile organic contaminants such as chloroform and benzene.

EXPOSURE: Contact with an agent through inhalation, ingestion, or touching. For example, exposure to radon is primarily through inhalation; exposure to lead is primarily through ingestion.

FILTRATION: Purification of water by removing undissolved solids or sediment by passing the water through a filter or sieve. Filtration does not remove dissolved salts or organic contaminants.

FRIABLE: Easily crumbled, pulverized, or reduced to a powder by hand.

LEVEL: Another term for concentration; also, the amount of a substance in a given volume of air, liquid or solid.

LITER: Metric unit of volume equivalent to 1.057 quarts of liquid. One gallon is equivalent to about four liters.

MILLIGRAM: A unit of weight. There are 1,000 milligrams in one gram and about 28 grams in one ounce.

MITIGATION: Mitigation means any action taken to reduce or eliminate the risk to human health and the environment from hazardous waste.

PARTS PER MILLION: A unit of concentration. For example, air that contains 1 part per million formaldehyde contains 1.2 milligrams formaldehyde in 1 million milliliters air, i.e. 1,000 liters air. Also, water which contains 1 part per million lead contains 1 milligram lead in 1 million milligrams water, i.e., 1 kilogram water. One part per million can be compared to one cent in ten thousand dollars.

PASSIVE DETECTOR: A measuring device that functions without any energy input or ongoing attention from the user. For example, use of a passive radon detector to measure radon requires only that the detector be left in place for a specified time.

PICOCURIE: A unit of amount used in measurement of radioactive substances. For example, five picocuries of radon are five trillionths of a curie and are equivalent to 11 radioactive radon atoms decaying every minute.

RADIOACTIVE: A term used to describe atoms that are unstable and break down or decay to form another kind of atom. For example, radium breaks down to form radon. In the process of decay some high-energy particles are emitted. The detection of these particles by special instruments indicates that a substance is radioactive. The high-energy particles and gamma rays are called radiation.

REACTIVE: A solid waste that is normally unstable, reacts violently with water, or generates toxic gases when exposed to water or other materials.

REVERSE OSMOSIS: A technology used to purify water by removing the salts from water. Osmosis involves the diffusion of water from a dilute to a concentrated solution across a semi-permeable membrane that allows only the passage of water. In reverse osmosis, water is forced through a semi-permeable membrane from a concentrated solution to a stream of purified water. For example, in the desalination of seawater, reverse osmosis is used to separate the salts from the water generating drinking water and a residue of salts.

RISK: In the context of this booklet, risk indicates the chance of developing a disease after exposure to an environmental hazard. Risk depends on the time period for which a person is exposed to a particular hazard and the level of the hazard.

SOFT WATER: Water that does not contain large amounts of dissolved minerals such as salts containing calcium or magnesium.

SOLDER: A metallic compound used to seal joints between pipes. Until recently, most solder contained about 50 percent lead. Lead solder is now banned for plumbing applications.

TOXICITY: The extent to which a material is toxic.



Protect Your Family From Lead in Your Home



United States
Environmental
Protection Agency



United States
Consumer Product
Safety Commission



United States
Department of Housing
and Urban Development

Are You Planning to Buy or Rent a Home Built Before 1978?

Did you know that many homes built before 1978 have **lead-based paint**? Lead from paint, chips, and dust can pose serious health hazards.

Read this entire brochure to learn:

- How lead gets into the body
- How lead affects health
- What you can do to protect your family
- Where to go for more information

Before renting or buying a pre-1978 home or apartment, federal law requires:

- Sellers must disclose known information on lead-based paint or lead-based paint hazards before selling a house.
- Real estate sales contracts must include a specific warning statement about lead-based paint. Buyers have up to 10 days to check for lead.
- Landlords must disclose known information on lead-based paint or lead-based paint hazards before leases take effect. Leases must include a specific warning statement about lead-based paint.

If undertaking renovations, repairs, or painting (RRP) projects in your pre-1978 home or apartment:

- Read EPA's pamphlet, *The Lead-Safe Certified Guide to Renovate Right*, to learn about the lead-safe work practices that contractors are required to follow when working in your home (see page 12).



Simple Steps to Protect Your Family from Lead Hazards

If you think your home has lead-based paint:

- Don't try to remove lead-based paint yourself.
- Always keep painted surfaces in good condition to minimize deterioration.
- Get your home checked for lead hazards. Find a certified inspector or risk assessor at [epa.gov/lead](https://www.epa.gov/lead).
- Talk to your landlord about fixing surfaces with peeling or chipping paint.
- Regularly clean floors, window sills, and other surfaces.
- Take precautions to avoid exposure to lead dust when remodeling.
- When renovating, repairing, or painting, hire only EPA- or state-approved Lead-Safe certified renovation firms.
- Before buying, renting, or renovating your home, have it checked for lead-based paint.
- Consult your health care provider about testing your children for lead. Your pediatrician can check for lead with a simple blood test.
- Wash children's hands, bottles, pacifiers, and toys often.
- Make sure children eat healthy, low-fat foods high in iron, calcium, and vitamin C.
- Remove shoes or wipe soil off shoes before entering your house.

Lead Gets into the Body in Many Ways

Adults and children can get lead into their bodies if they:

- Breathe in lead dust (especially during activities such as renovations, repairs, or painting that disturb painted surfaces).
- Swallow lead dust that has settled on food, food preparation surfaces, and other places.
- Eat paint chips or soil that contains lead.

Lead is especially dangerous to children under the age of 6.

- At this age, children's brains and nervous systems are more sensitive to the damaging effects of lead.
- Children's growing bodies absorb more lead.
- Babies and young children often put their hands and other objects in their mouths. These objects can have lead dust on them.



Women of childbearing age should know that lead is dangerous to a developing fetus.

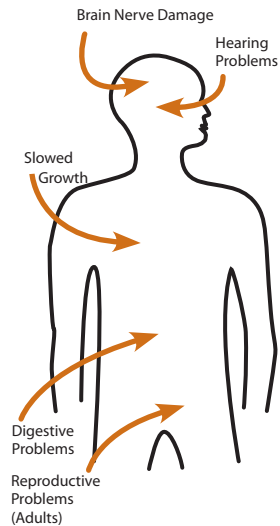
- Women with a high lead level in their system before or during pregnancy risk exposing the fetus to lead through the placenta during fetal development.

Health Effects of Lead

Lead affects the body in many ways. It is important to know that even exposure to low levels of lead can severely harm children.

In children, exposure to lead can cause:

- Nervous system and kidney damage
- Learning disabilities, attention-deficit disorder, and decreased intelligence
- Speech, language, and behavior problems
- Poor muscle coordination
- Decreased muscle and bone growth
- Hearing damage



While low-lead exposure is most common, exposure to high amounts of lead can have devastating effects on children, including seizures, unconsciousness, and in some cases, death.

Although children are especially susceptible to lead exposure, lead can be dangerous for adults, too.

In adults, exposure to lead can cause:

- Harm to a developing fetus
- Increased chance of high blood pressure during pregnancy
- Fertility problems (in men and women)
- High blood pressure
- Digestive problems
- Nerve disorders
- Memory and concentration problems
- Muscle and joint pain

Check Your Family for Lead

Get your children and home tested if you think your home has lead.

Children's blood lead levels tend to increase rapidly from 6 to 12 months of age, and tend to peak at 18 to 24 months of age.

Consult your doctor for advice on testing your children. A simple blood test can detect lead. Blood lead tests are usually recommended for:

- Children at ages 1 and 2
- Children or other family members who have been exposed to high levels of lead
- Children who should be tested under your state or local health screening plan

Your doctor can explain what the test results mean and if more testing will be needed.

Where Lead-Based Paint Is Found

In general, the older your home or childcare facility, the more likely it has lead-based paint.¹

Many homes, including private, federally-assisted, federally-owned housing, and childcare facilities built before 1978 have lead-based paint. In 1978, the federal government banned consumer uses of lead-containing paint.²

Learn how to determine if paint is lead-based paint on page 7.

Lead can be found:

- In homes and childcare facilities in the city, country, or suburbs,
- In private and public single-family homes and apartments,
- On surfaces inside and outside of the house, and
- In soil around a home. (Soil can pick up lead from exterior paint or other sources, such as past use of leaded gas in cars.)

Learn more about where lead is found at [epa.gov/lead](https://www.epa.gov/lead).

¹ “Lead-based paint” is currently defined by the federal government as paint with lead levels greater than or equal to 1.0 milligram per square centimeter (mg/cm²), or more than 0.5% by weight.

² “Lead-containing paint” is currently defined by the federal government as lead in new dried paint in excess of 90 parts per million (ppm) by weight.

Identifying Lead-Based Paint and Lead-Based Paint Hazards

Deteriorated lead-based paint (peeling, chipping, chalking, cracking, or damaged paint) is a hazard and needs immediate attention. **Lead-based paint** may also be a hazard when found on surfaces that children can chew or that get a lot of wear and tear, such as:

- On windows and window sills
- Doors and door frames
- Stairs, railings, banisters, and porches

Lead-based paint is usually not a hazard if it is in good condition and if it is not on an impact or friction surface like a window.

Lead dust can form when lead-based paint is scraped, sanded, or heated. Lead dust also forms when painted surfaces containing lead bump or rub together. Lead paint chips and dust can get on surfaces and objects that people touch. Settled lead dust can reenter the air when the home is vacuumed or swept, or when people walk through it. EPA currently defines the following levels of lead in dust as hazardous:

- 10 micrograms per square foot ($\mu\text{g}/\text{ft}^2$) and higher for floors, including carpeted floors
- 100 $\mu\text{g}/\text{ft}^2$ and higher for interior window sills

Lead in soil can be a hazard when children play in bare soil or when people bring soil into the house on their shoes. EPA currently defines the following levels of lead in soil as hazardous:

- 400 parts per million (ppm) and higher in play areas of bare soil
- 1,200 ppm (average) and higher in bare soil in the remainder of the yard

Remember, lead from paint chips—which you can see—and lead dust—which you may not be able to see—both can be hazards.

The only way to find out if paint, dust, or soil lead hazards exist is to test for them. The next page describes how to do this.

Checking Your Home for Lead

You can get your home tested for lead in several different ways:

- A lead-based paint **inspection** tells you if your home has lead-based paint and where it is located. It won't tell you whether your home currently has lead hazards. A trained and certified testing professional, called a lead-based paint inspector, will conduct a paint inspection using methods, such as:
 - Portable x-ray fluorescence (XRF) machine
 - Lab tests of paint samples
- A **risk assessment** tells you if your home currently has any lead hazards from lead in paint, dust, or soil. It also tells you what actions to take to address any hazards. A trained and certified testing professional, called a risk assessor, will:
 - Sample paint that is deteriorated on doors, windows, floors, stairs, and walls
 - Sample dust near painted surfaces and sample bare soil in the yard
 - Get lab tests of paint, dust, and soil samples
- A combination inspection and risk assessment tells you if your home has any lead-based paint and if your home has any lead hazards, and where both are located.



Be sure to read the report provided to you after your inspection or risk assessment is completed, and ask questions about anything you do not understand.

Checking Your Home for Lead, continued

In preparing for renovation, repair, or painting work in a pre-1978 home, Lead-Safe Certified renovators (see page 12) may:

- Take paint chip samples to determine if lead-based paint is present in the area planned for renovation and send them to an EPA-recognized lead lab for analysis. In housing receiving federal assistance, the person collecting these samples must be a certified lead-based paint inspector or risk assessor
- Use EPA-recognized tests kits to determine if lead-based paint is absent (but not in housing receiving federal assistance)
- Presume that lead-based paint is present and use lead-safe work practices

There are state and federal programs in place to ensure that testing is done safely, reliably, and effectively. Contact your state or local agency for more information, visit [epa.gov/lead](https://www.epa.gov/lead), or call **1-800-424-LEAD (5323)** for a list of contacts in your area.³

³ Hearing- or speech-challenged individuals may access this number through TTY by calling the Federal Relay Service at 1-800-877-8339.

What You Can Do Now to Protect Your Family

If you suspect that your house has lead-based paint hazards, you can take some immediate steps to reduce your family's risk:

- If you rent, notify your landlord of peeling or chipping paint.
- Keep painted surfaces clean and free of dust. Clean floors, window frames, window sills, and other surfaces weekly. Use a mop or sponge with warm water and a general all-purpose cleaner. (Remember: never mix ammonia and bleach products together because they can form a dangerous gas.)
- Carefully clean up paint chips immediately without creating dust.
- Thoroughly rinse sponges and mop heads often during cleaning of dirty or dusty areas, and again afterward.
- Wash your hands and your children's hands often, especially before they eat and before nap time and bed time.
- Keep play areas clean. Wash bottles, pacifiers, toys, and stuffed animals regularly.
- Keep children from chewing window sills or other painted surfaces, or eating soil.
- When renovating, repairing, or painting, hire only EPA- or state-approved Lead-Safe Certified renovation firms (see page 12).
- Clean or remove shoes before entering your home to avoid tracking in lead from soil.
- Make sure children eat nutritious, low-fat meals high in iron, and calcium, such as spinach and dairy products. Children with good diets absorb less lead.

Reducing Lead Hazards

Disturbing lead-based paint or removing lead improperly can increase the hazard to your family by spreading even more lead dust around the house.

- In addition to day-to-day cleaning and good nutrition, you can **temporarily** reduce lead-based paint hazards by taking actions, such as repairing damaged painted surfaces and planting grass to cover lead-contaminated soil. These actions are not permanent solutions and will need ongoing attention.
- You can minimize exposure to lead when renovating, repairing, or painting by hiring an EPA- or state-certified renovator who is trained in the use of lead-safe work practices. If you are a do-it-yourselfer, learn how to use lead-safe work practices in your home.
- To remove lead hazards permanently, you should hire a certified lead abatement contractor. Abatement (or permanent hazard elimination) methods include removing, sealing, or enclosing lead-based paint with special materials. Just painting over the hazard with regular paint is not permanent control.



Always use a certified contractor who is trained to address lead hazards safely.

- Hire a Lead-Safe Certified firm (see page 12) to perform renovation, repair, or painting (RRP) projects that disturb painted surfaces.
- To correct lead hazards permanently, hire a certified lead abatement contractor. This will ensure your contractor knows how to work safely and has the proper equipment to clean up thoroughly.

Certified contractors will employ qualified workers and follow strict safety rules as set by their state or by the federal government.

Reducing Lead Hazards, continued

If your home has had lead abatement work done or if the housing is receiving federal assistance, once the work is completed, dust cleanup activities must be conducted until clearance testing indicates that lead dust levels are below the following levels:

- 10 micrograms per square foot ($\mu\text{g}/\text{ft}^2$) for floors, including carpeted floors
- 100 $\mu\text{g}/\text{ft}^2$ for interior windows sills
- 400 $\mu\text{g}/\text{ft}^2$ for window troughs

Abatements are designed to permanently eliminate lead-based paint hazards. However, lead dust can be reintroduced into an abated area.

- Use a HEPA vacuum on all furniture and other items returned to the area, to reduce the potential for reintroducing lead dust.
- Regularly clean floors, window sills, troughs, and other hard surfaces with a damp cloth or sponge and a general all-purpose cleaner.

Please see page 9 for more information on steps you can take to protect your home after the abatement. For help in locating certified lead abatement professionals in your area, call your state or local agency (see pages 15 and 16), [epa.gov/lead](https://www.epa.gov/lead), or call 1-800-424-LEAD.

Renovating, Repairing or Painting a Home with Lead-Based Paint

If you hire a contractor to conduct renovation, repair, or painting (RRP) projects in your pre-1978 home or childcare facility (such as pre-school and kindergarten), your contractor must:

- Be a Lead-Safe Certified firm approved by EPA or an EPA-authorized state program
- Use qualified trained individuals (Lead-Safe Certified renovators) who follow specific lead-safe work practices to prevent lead contamination
- Provide a copy of EPA's lead hazard information document, *The Lead-Safe Certified Guide to Renovate Right*



RRP contractors working in pre-1978 homes and childcare facilities must follow lead-safe work practices that:

- **Contain the work area.** The area must be contained so that dust and debris do not escape from the work area. Warning signs must be put up, and plastic or other impermeable material and tape must be used.
- **Avoid renovation methods that generate large amounts of lead-contaminated dust.** Some methods generate so much lead-contaminated dust that their use is prohibited. They are:
 - Open-flame burning or torching
 - Sanding, grinding, planing, needle gunning, or blasting with power tools and equipment not equipped with a shroud and HEPA vacuum attachment
 - Using a heat gun at temperatures greater than 1100°F
- **Clean up thoroughly.** The work area should be cleaned up daily. When all the work is done, the area must be cleaned up using special cleaning methods.
- **Dispose of waste properly.** Collect and seal waste in a heavy duty bag or sheeting. When transported, ensure that waste is contained to prevent release of dust and debris.

To learn more about EPA's requirements for RRP projects, visit epa.gov/getleadsafe, or read *The Lead-Safe Certified Guide to Renovate Right*.

Other Sources of Lead

Lead in Drinking Water

The most common sources of lead in drinking water are lead pipes, faucets, and fixtures.

Lead pipes are more likely to be found in older cities and homes built before 1986.

You can't smell or taste lead in drinking water.

To find out for certain if you have lead in drinking water, have your water tested.

Remember older homes with a private well can also have plumbing materials that contain lead.

Important Steps You Can Take to Reduce Lead in Drinking Water

- Use only cold water for drinking, cooking and making baby formula. Remember, boiling water does not remove lead from water.
- Before drinking, flush your home's pipes by running the tap, taking a shower, doing laundry, or doing a load of dishes.
- Regularly clean your faucet's screen (also known as an aerator).
- If you use a filter certified to remove lead, don't forget to read the directions to learn when to change the cartridge. Using a filter after it has expired can make it less effective at removing lead.

Contact your water company to determine if the pipe that connects your home to the water main (called a service line) is made from lead. Your area's water company can also provide information about the lead levels in your system's drinking water.

For more information about lead in drinking water, please contact EPA's Safe Drinking Water Hotline at 1-800-426-4791. If you have other questions about lead poisoning prevention, call 1-800 424-LEAD.*

Call your local health department or water company to find out about testing your water, or visit [epa.gov/safewater](https://www.epa.gov/safewater) for EPA's lead in drinking water information. Some states or utilities offer programs to pay for water testing for residents. Contact your state or local water company to learn more.

* Hearing- or speech-challenged individuals may access this number through TTY by calling the Federal Relay Service at 1-800-877-8339.

Other Sources of Lead, continued

- **Lead smelters** or other industries that release lead into the air.
- **Your job.** If you work with lead, you could bring it home on your body or clothes. Shower and change clothes before coming home. Launder your work clothes separately from the rest of your family's clothes.
- **Hobbies** that use lead, such as making pottery or stained glass, or refinishing furniture. Call your local health department for information about hobbies that may use lead.
- Old **toys** and **furniture** may have been painted with lead-containing paint. Older toys and other children's products may have parts that contain lead.⁴
- Food and liquids cooked or stored in **lead crystal** or **lead-glazed pottery or porcelain** may contain lead.
- Folk remedies, such as "**greta**" and "**azarcon,**" used to treat an upset stomach.

⁴ In 1978, the federal government banned toys, other children's products, and furniture with lead-containing paint. In 2008, the federal government banned lead in most children's products. The federal government currently bans lead in excess of 100 ppm by weight in most children's products.

For More Information

The National Lead Information Center

Learn how to protect children from lead poisoning and get other information about lead hazards on the Web at epa.gov/lead and hud.gov/lead, or call **1-800-424-LEAD (5323)**.

EPA's Safe Drinking Water Hotline

For information about lead in drinking water, call **1-800-426-4791**, or visit epa.gov/safewater for information about lead in drinking water.

Consumer Product Safety Commission (CPSC) Hotline

For information on lead in toys and other consumer products, or to report an unsafe consumer product or a product-related injury, call **1-800-638-2772**, or visit CPSC's website at cpsc.gov or saferproducts.gov.

State and Local Health and Environmental Agencies

Some states, tribes, and cities have their own rules related to lead-based paint. Check with your local agency to see which laws apply to you. Most agencies can also provide information on finding a lead abatement firm in your area, and on possible sources of financial aid for reducing lead hazards. Receive up-to-date address and phone information for your state or local contacts on the Web at epa.gov/lead, or contact the National Lead Information Center at **1-800-424-LEAD**.

Hearing- or speech-challenged individuals may access any of the phone numbers in this brochure through TTY by calling the toll-free Federal Relay Service at **1-800-877-8339**.

U. S. Environmental Protection Agency (EPA)

Regional Offices

The mission of EPA is to protect human health and the environment. Your Regional EPA Office can provide further information regarding regulations and lead protection programs.

Region 1 (Connecticut, Massachusetts, Maine, New Hampshire, Rhode Island, Vermont)

Regional Lead Contact
U.S. EPA Region 1
5 Post Office Square, Suite 100, OES 05-4
Boston, MA 02109-3912
(888) 372-7341

Region 2 (New Jersey, New York, Puerto Rico, Virgin Islands)

Regional Lead Contact
U.S. EPA Region 2
2890 Woodbridge Avenue
Building 205, Mail Stop 225
Edison, NJ 08837-3679
(732) 906-6809

Region 3 (Delaware, Maryland, Pennsylvania, Virginia, DC, West Virginia)

Regional Lead Contact
U.S. EPA Region 3
1650 Arch Street
Philadelphia, PA 19103
(215) 814-2088

Region 4 (Alabama, Florida, Georgia, Kentucky, Mississippi, North Carolina, South Carolina, Tennessee)

Regional Lead Contact
U.S. EPA Region 4
AFC Tower, 12th Floor, Air, Pesticides & Toxics
61 Forsyth Street, SW
Atlanta, GA 30303
(404) 562-8998

Region 5 (Illinois, Indiana, Michigan, Minnesota, Ohio, Wisconsin)

Regional Lead Contact
U.S. EPA Region 5 (LL-17J)
77 West Jackson Boulevard
Chicago, IL 60604-3666
(312) 353-3808

Region 6 (Arkansas, Louisiana, New Mexico, Oklahoma, Texas, and 66 Tribes)

Regional Lead Contact
U.S. EPA Region 6
1445 Ross Avenue, 12th Floor
Dallas, TX 75202-2733
(214) 665-2704

Region 7 (Iowa, Kansas, Missouri, Nebraska)

Regional Lead Contact
U.S. EPA Region 7
11201 Renner Blvd.
Lenexa, KS 66219
(800) 223-0425

Region 8 (Colorado, Montana, North Dakota, South Dakota, Utah, Wyoming)

Regional Lead Contact
U.S. EPA Region 8
1595 Wynkoop St.
Denver, CO 80202
(303) 312-6966

Region 9 (Arizona, California, Hawaii, Nevada)

Regional Lead Contact
U.S. EPA Region 9 (CMD-4-2)
75 Hawthorne Street
San Francisco, CA 94105
(415) 947-4280

Region 10 (Alaska, Idaho, Oregon, Washington)

Regional Lead Contact
U.S. EPA Region 10 (20-C04)
Air and Toxics Enforcement Section
1200 Sixth Avenue, Suite 155
Seattle, WA 98101
(206) 553-1200

Consumer Product Safety Commission (CPSC)

The CPSC protects the public against unreasonable risk of injury from consumer products through education, safety standards activities, and enforcement. Contact CPSC for further information regarding consumer product safety and regulations.

CPSC

4330 East West Highway
Bethesda, MD 20814-4421
1-800-638-2772
cpsc.gov or saferproducts.gov

U. S. Department of Housing and Urban Development (HUD)

HUD's mission is to create strong, sustainable, inclusive communities and quality affordable homes for all. Contact to Office of Lead Hazard Control and Healthy Homes for further information regarding the Lead Safe Housing Rule, which protects families in pre-1978 assisted housing, and for the lead hazard control and research grant programs.

HUD

451 Seventh Street, SW, Room 8236
Washington, DC 20410-3000
(202) 402-7698
hud.gov/lead

This document is in the public domain. It may be produced by an individual or organization without permission. Information provided in this booklet is based upon current scientific and technical understanding of the issues presented and is reflective of the jurisdictional boundaries established by the statutes governing the co-authoring agencies. Following the advice given will not necessarily provide complete protection in all situations or against all health hazards that can be caused by lead exposure.

IMPORTANT!

Lead From Paint, Dust, and Soil in and Around Your Home Can Be Dangerous if Not Managed Properly

- Children under 6 years old are most at risk for lead poisoning in your home.
- Lead exposure can harm young children and babies even before they are born.
- Homes, schools, and child care facilities built before 1978 are likely to contain lead-based paint.
- Even children who seem healthy may have dangerous levels of lead in their bodies.
- Disturbing surfaces with lead-based paint or removing lead-based paint improperly can increase the danger to your family.
- People can get lead into their bodies by breathing or swallowing lead dust, or by eating soil or paint chips containing lead.
- People have many options for reducing lead hazards. Generally, lead-based paint that is in good condition is not a hazard (see page 10).



What is your **Home**
ENERGY
RATING



know before you buy or sell

- Lower your energy bills
- Enjoy a safer, more comfortable and durable home
- Reduce your impact on the environment
- Increase your home's sales appeal and appraisal value

What
is your

Home
**ENERGY
RATING**

// Whether you are buying or selling a residential property, or staying in your current home, every Californian should know his or her home **energy rating.** **//**

Contents

Know the Facts	4
What Is a Home Energy Rating?	5
Understanding Your HERS Index	6
HERS Recommendations	7
Making Wise Improvements	8
Utility Bills and Ratings	9
Financing Your Improvements	10
Efficiency Adds Value	12
Go Solar California!	13

What is your Home ENERGY RATING

California is a national leader in promoting energy efficiency. As a result, our energy use per person has remained stable for over 30 years while the national average has steadily increased. Despite this success, we must continue to reduce energy use in our homes. The benefits are highly valuable — reducing energy use not only lowers your energy bills, but helps our electricity system remain reliable, even during high peak-load periods, while also protecting our environment.

In 2006, California established aggressive goals to reduce greenhouse gases that cause global warming. These goals will cut today's carbon emissions by 25 percent, so we can return to 1990 levels by the year 2020. Efforts to accomplish this goal represent important first steps in addressing the threat of global warming. We owe our children and grandchildren nothing less.

As you consider the sale or purchase of your home, this booklet asks that you recognize what energy efficiency measures have been built into the home, or ways to make further improvements to save energy and reduce peak electricity demand.

Your energy efficiency actions help make California a better, more environmentally sustainable place to raise your families.

Whether you are buying or selling a residential property, or staying in your current home, every Californian should know his or her home energy rating. Wasted energy wastes more than just your money — it changes our climate. The scientific community agrees that we must act now or risk facing an uncertain future.

The California Home Energy Rating System (HERS) Program provides a reliable way to estimate and compare the energy efficiency of California homes and identify wise energy saving

improvements. This booklet explains how the HERS program works and helps you find a qualified professional to rate your own home. Once you know your home energy rating, you will be able to choose smart energy upgrades and investments that will benefit your family now... and generations to come.

During a real estate transaction, a California HERS Rating is a great way to disclose facts about the energy efficiency of a home.

Know the
FACTS

Whether you are getting ready to sell your home – or preparing to buy one – knowing the energy efficiency facts about the property is a major consideration. As buyers become more aware of the benefits of an energy-efficient home, homes with a favorable home energy rating may be more attractive to buyers.

Have you checked your ducts?

Heating and cooling ducts in an average California home leak almost 30 percent. That is why when heating or cooling equipment is replaced, testing the system's ducts for leaks is now required by building officials in many parts of the state.

If you are selling your home and had upgrades made without the required permits or duct testing, be sure to disclose this on your Real Estate Transfer Disclosure Statement. If you are preparing to buy a home that had duct work performed after October 2005, ask to see the duct testing report, or an explanation as to why such testing was not required.

For more information, visit:
www.energy.ca.gov/title24/changeout/

Selling?

A HERS rating will:

- Help determine facts about the energy efficiency of your home.
- Identify energy improvements that may make your home more attractive to buyers.
- Alert appraisers to add value for any energy improvements you may have made already.

Buying?

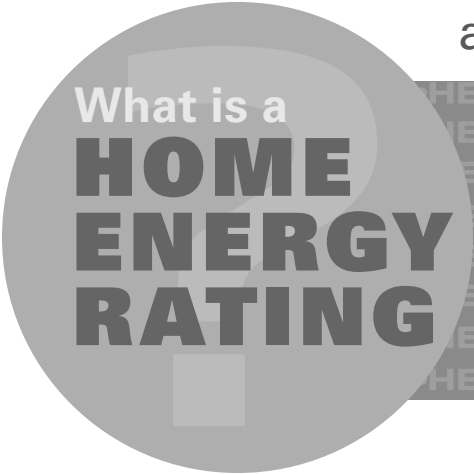
- Use a HERS rating to shop and compare the energy efficiency of homes you are considering.
- Learn about the most cost-effective options for lowering the energy bills in any home you are considering buying.
- Identify and qualify for energy efficiency financing.

Staying in your current home?

- Find out your HERS rating.
- Discover the best options for lowering your energy bills.
- Identify energy efficiency improvements that may also make your home more comfortable.
- Find resources to help finance your improvements.
- Improve your home's resale value.



You wouldn't buy a new car without knowing its "miles per gallon" rating. So why buy a home without a "home energy rating?"



What is a
**HOME
ENERGY
RATING**

A Whole-House Home Energy Rating is a comprehensive evaluation of the efficiency of the entire home. The homeowner receives a written report that includes a numeric score or "rating" of the home, plus recommendations for improvements that will reduce energy bills and make the home more comfortable. Knowing the energy rating of your home is similar to knowing the miles per gallon rating of your car.

The California Energy Commission has developed the California Home Energy Rating System (HERS) Program to cover almost every type of residence in California. This includes new and existing single-family homes and multifamily buildings of three stories or less. Energy Commission-approved HERS Providers train, certify, and oversee a new type of service professional known as a "California Whole-House Home Energy Rater."

Each California HERS Rater must follow standardized energy auditing procedures and use energy analysis software that meets the Energy Commission's technical requirements. The HERS Rater will inspect and assess all the major energy efficiency features of your home:

- Air leaks (sealed or unsealed)
- Cooling system
- Heating system
- Water heating system
- Heating and cooling ducts and/or pipes
- Insulation (attic, walls, floor)
- Windows
- Attached lighting fixtures
- Major appliances
- Solar electricity generating systems (if any)
- Other energy uses

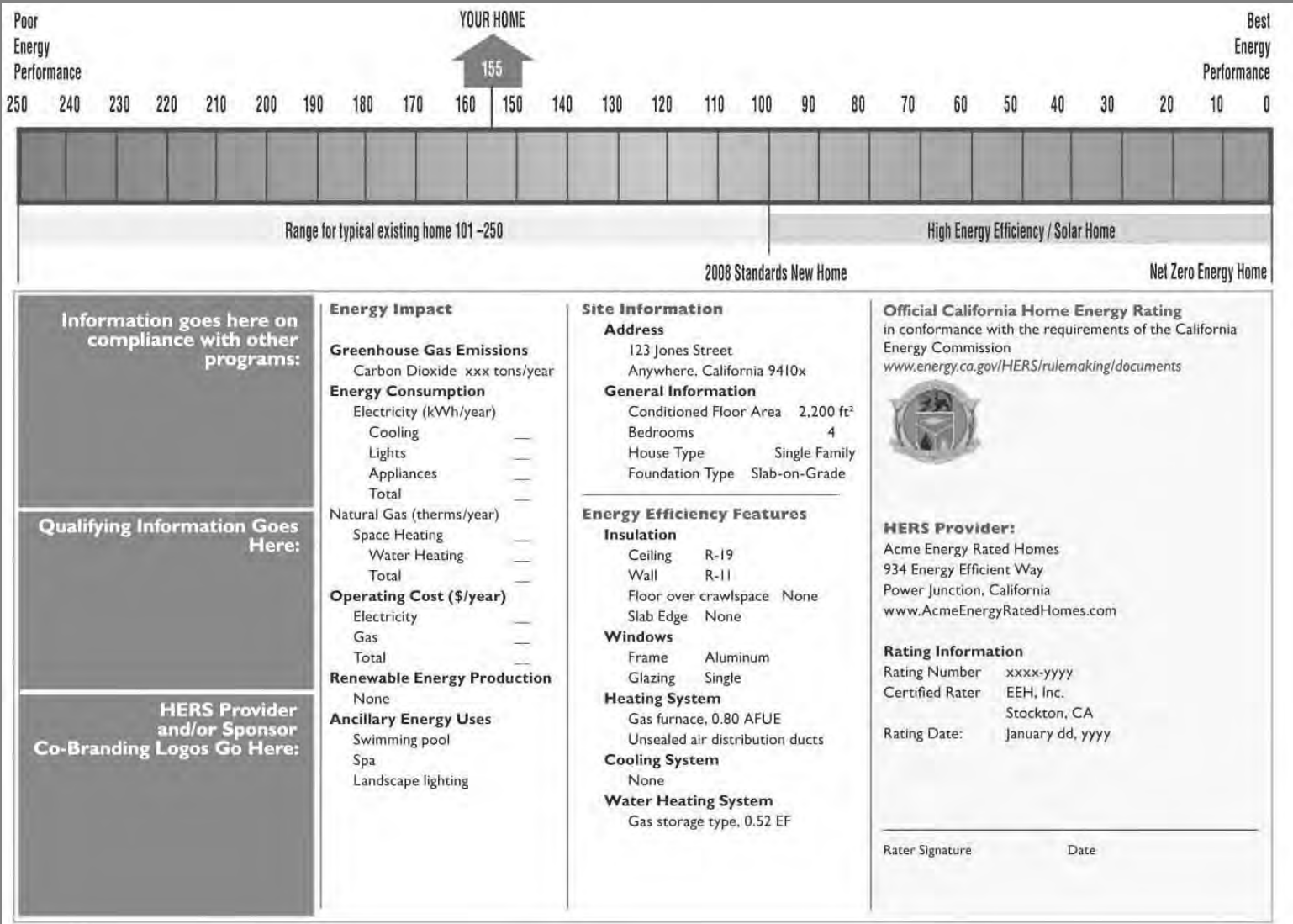
Your HERS report will identify the most cost-effective and appropriate energy efficiency improvements for your home. Only a properly prepared HERS Report will receive an official California Home Energy Rating Certificate with the California Energy Commission's seal.

Rating costs vary depending on factors such as the size and features of your home and the extent of rater services needed. Ask your real estate agent for names of certified HERS Raters in your area or find an Energy Commission-approved HERS Provider at: www.energy.ca.gov/HERS/index.html or call the Energy Hotline at (800) 772-3300.

Your HERS Rating Certificate will:

- Display an official HERS Index efficiency rating on a 0 to 250-point scale.
- Itemize the home's major energy-efficiency features as determined by the HERS Rater.
- Estimate the home's annual energy use, operating cost, and greenhouse gas emissions.
- Calculate the amount of solar or other onsite renewable energy that the home may produce.

Understanding your HERS index



*What is your Home Energy Rating?
How low can it go?*

**A lower HERS Index indicates a more energy efficient home.
A home with a HERS Index of:**

- "250" or more is likely to have very high energy bills, and many opportunities for efficiency improvements.
- "100" uses the same energy as a new home that meets California's 2008 Building Energy Efficiency Standards.
- "0" is a super-efficient "Net Zero Energy Home" that consumes no more energy than it produces with solar or other onsite renewable sources.

HERS Recommendations

Your HERS report will contain detailed recommendations so that you can learn about all the improvements that are cost-effective and appropriate for your particular home. Here are a few examples:

Test and seal air leaks in building envelope

A pressure test will show where the air is leaking out so you can make your home less drafty.



Increase attic insulation to R-38

Properly installed insulation makes your home quieter and more comfortable.



Test and seal air duct leaks

Almost every home in California has leaky ducts, typically wasting 30 percent or more.



Tune-up the heating and cooling system

Proper maintenance saves energy and improves comfort and safety.



Upgrade to a correctly sized ENERGY STAR® furnace

A new ENERGY STAR® furnace will run more quietly and keep you warm all winter for less money.



Hire a Professional

Don't trust just anyone to make your improvements. Trying to save a little can sometimes cost you more in the long run. Instead, find one or more licensed specialty contractors who have the knowledge, tools, and skills to do each job right. You may want to consider a "building performance" contractor who is a licensed general contractor and is specially trained and certified to help address all of the energy and comfort improvement opportunities in your home and make them work together as an efficient system. The Contractors State License Board website www.cslb.ca.gov provides more information on how to choose a qualified contractor.

Making WISE IMPROVEMENTS



Do it Yourself

Some improvements are so easy and inexpensive, you don't need a HERS rating to know they pay back quickly:

- Replace incandescent bulbs with ENERGY STAR® compact fluorescent lamps (CFLs).
- Replace all nightlights and holiday lights with light-emitting diodes (LEDs).
- Choose ENERGY STAR® appliances, computers, and televisions.
- Install low-flow showerheads and faucet aerators.
- Insulate the first 5 feet of pipes from the cold and hot water heater.
- Add or repair weather stripping on all doors and windows.
- Use caulk and spray foam to fill all visible air gaps.
- Clean or replace furnace air filters monthly.
- Plant shade trees.



Energy Wise HABITS

These no-cost tips will help reduce the energy consumption in your home:

- Turn off lights and computers when not in use.
- Use a power strip for televisions, DVD players, VCRs, and chargers, and turn off power to the strip when not in use.
- Recycle burned-out CFL bulbs, fluorescent tubes, televisions, computer monitors, and all other electronic waste.
- Unplug and recycle any inefficient old refrigerators and freezers.
- Use appliances efficiently. Use your dishwasher and clothes washer for full loads only. Use the cold water setting on your clothes washer when possible.
- Turn down the water heater to 120 degrees Fahrenheit.
- Use your drapes properly. In the summer, close your drapes during the day. In the winter, open your drapes during the day and close your drapes at night.
- Open your windows for natural ventilation on cool summer mornings and nights.

A \$100 per month reduction in your utility bills frees up enough cash to pay for a \$17,000 increase in your mortgage (assuming 6 percent interest over 30 years).

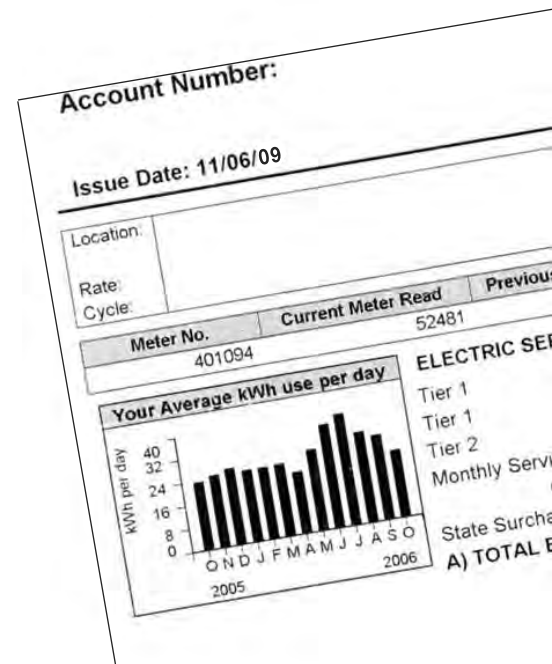
Utility Bills & RATINGS

Home energy efficiency ratings are designed to help you focus on the physical features of the house – not on other factors that can affect energy consumption like unusual weather or personal energy use habits.

Utility bills give a personal perspective: the history of how much energy the occupants of the home actually used over a period. Unless you consider a rating coupled with the utility bills, you may get only half of the story.

As a potential buyer, you should always ask to see the previous occupant's energy bills. While sellers are not obligated to share their utility bills, many will if asked.

If the old bills have not been saved, current occupants can access their records by calling the local utility or by setting up an account on the utility's website. Your HERS Rater can assist you in obtaining the bills and will consider them to establish a more complete picture of your home energy use to make the best recommendations for improvements. A Home Buyers' Energy Checklist that helps buyers ask questions related to the home's energy use is available at: www.energy.ca.gov/HERS/index.html.



Energy efficiency is different than energy consumption. Efficiency depends upon the physical features of the home and all the equipment it contains. Consumption is reduced through efficiency but also depends on the energy use behavior of the occupants. Wasteful habits, unusual weather, or malfunctioning equipment can drive up energy bills, even in the most energy-efficient house in the neighborhood.

After your mortgage payment, your energy bill is often the second largest monthly home ownership expense.



Financing your
IMPROVEMENTS

Principal
+ **I**nterest
+ **T**axes
+ **I**nsurance
+ **E**nergy

**True cost of owning
your home**

If you are buying or refinancing and looking for a way to finance your energy improvements, you should get advice from a knowledgeable real estate agent or lender about the many new options now available. The federal government, Fannie Mae/Freddie Mac, and many major lenders are introducing new products to help you fund your energy efficiency improvements. Some cities and counties also have programs that allow homeowners to finance efficiency improvements and solar installations over 20 years.

You may also be able to qualify for an Energy Efficient Mortgage (EEM). An EEM is a loan program that recognizes the importance of the energy efficiency of a home and allows for cost-effective energy upgrades to be financed in the mortgage. A HERS rating is required to qualify for an EEM. These loans provide borrowers the opportunity to make energy efficiency improvements to their homes and gain several desirable benefits including:

- Provide the ability to roll the cost of your efficiency improvements into a low mortgage rate.
- May stretch your debt-to-income qualifying ratio.
- Enjoy your improvements and energy savings right away.
- Earn a higher resale price when you sell.

Best of all, you get to enjoy all the benefits of your home improvements for the same total monthly cost (PITI+E)...or maybe even less.

EEM programs are available from:

- Federal Housing Authority (FHA)
- Veterans Administration (VA)
- Conventional lenders (Fannie Mae, Freddie Mac)
- Other home-buyer or refinancing programs

Combine an EEM with other programs and you may be able to borrow up to \$40,000 or more for efficiency improvements. Ask a knowledgeable lender if an EEM is right for you.

Another way to finance energy improvements is through an equity loan or equity line of credit. If your HERS rating is low enough, some lenders may offer a “green” mortgage or equity line of credit at a discount relative to their regular interest rates or points. Shop around to see if these products make sense for you. Utilities also offer financial incentives such as re-bates, for energy smart improvements, such as:

- Added insulation
- ENERGY STAR® appliances
- Refrigerator recycling
- High-efficiency heating and air conditioning systems
- Compact fluorescent light fixtures
- Whole-house fans, cool roofs, swimming pool pump motors, and more

Contact your local utility for information on their program offerings. Manufacturers also offer discounts or rebates on efficient products so check their websites or with a retailer for possible offers.





It's no secret; energy efficiency features may make your home more valuable and sell faster.

Federal tax credits now available include:

10 percent of the cost, up to \$500 or a specific amount from \$50-\$300, through 2011 (existing homes only) for:

- Windows and Doors
- Biomass Stoves
- Insulation
- Roofs
- HVAC
- Water Heaters

30 percent of the cost, with no upper limit through 2016 (existing homes and new construction) for:

- Geothermal Heat Pumps
- Small Wind Turbines (Residential)
- Solar Energy Systems

For more news on energy efficiency tax credits, visit: www.energystar.gov/taxcredits

Did You Know?

- A study of energy-efficient homes in The Appraisal Journal showed that a \$1 reduction in annual energy bills resulted in more than \$10 increase in resale value.
- A past president of the California Association of Real Estate Appraisers recommends that appraisals account for any efficiency improvements because they "so contribute to the habitability, enjoyability and economic stability of the home."
- FHA authorizes the cost of energy efficiency measures to be added to the mortgage.
- Home builders find that homes with efficiency and solar electricity upgrades sell faster and at higher prices than similar homes nearby.

Make sure your real estate agent knows about any efficiency improvements you have made, let buyers know your home is "Energy-Rated," and give the appraiser a copy of your HERS Report.

The energy used in the average home produces roughly twice as much greenhouse gas pollution as the average car (US EPA).

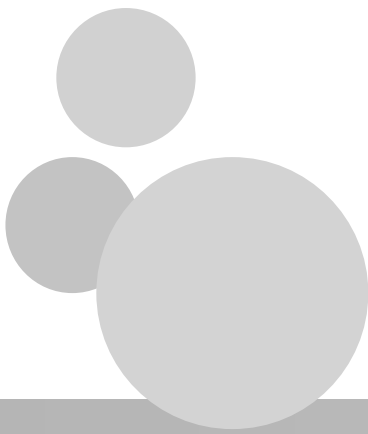


Once you have made all appropriate energy efficiency improvements, you may also want to consider solar electric generation.

If you have already decided on the size of solar electric system, investing in energy efficiency measures first will allow your solar system to power more of your home's electricity need. Plan ahead and don't oversize your new solar electric system to power an energy-inefficient house. Your HERS Rater will show you how.

California has set a goal to generate 3,000 megawatts of new, solar-produced electricity by 2017 — moving the state toward a cleaner energy future and lowering the cost of solar systems for all consumers. The California Solar Initiative offers incentives up to 30 percent off the installed cost of a solar system for a typical home. This discount may be combined with any federal tax credits or other incentives available.

Visit
www.gosolarcalifornia.ca.gov
for details.



The California Energy Commission does not endorse any product, supplier, manufacturer, builder or organization.

The text in this booklet is designed to be informational and not all-inclusive.



CALIFORNIA
ENERGY COMMISSION

ACKNOWLEDGEMENTS

ADVISORY COMMITTEE

Arlene Baxter	REALTOR®, Berkeley, CA
Mike Bachand	CalCERTS, Inc.
Elizabeth Gavric	California Association of REALTORS®, Government Affairs
Greg Harding	Office of Real Estate Appraisers
Shery Hoellwarth	ConSol, Inc.
Paula B. Howell	Energy Documentation Services
William Jansen	Broker Risk Management
Jana Maddux	CHEERS®
Scott Muldavin	Green Building Finance Consortium; The Mauldavin Company
William Neece	Green Key Real Estate
Chris Neri	California Department of Real Estate
William Poulton	California Real Estate Inspection Association
Randal Riedel	California Building Performance Contractors Association
Charles Segerstrom	Pacific Gas & Electric Company
Bernie Stephan	Broker, Marin County

PROJECT CONSULTANTS

Tom Conlon	GeoPraxis, Inc.
Charles Eley	Architectural Energy Corporation
Margaret Kapranos	REALTOR®, Greenbrae, CA
Dan Suyeyasu	Architectural Energy Corporation
Andrew Waegel	GeoPraxis, Inc.

ADDITIONAL CONTRIBUTORS

Rashid Mir	California Energy Commission
Betty LaFranchi	California Energy Commission
Vanessa Byrd	California Energy Commission
Bruce Maeda	California Energy Commission
Beverly Duffy	California Energy Commission
Parker Scott	California Energy Commission
Lance DeLaura	SEMPRA

Governor
Jerry Brown

Chairman
Robert Weisenmiller, Ph.D.

Vice Chairman
James D. Boyd

Commissioners
Karen Douglas
Carla Peterman
Anthony Eggert

Executive Director
Robert Oglesby

Deputy Director
Efficiency and Renewable
Energy Division
Panama Bartholomy

Office Manager
High Performance Buildings and
Standards Development
Bill Pennington

Project Manager
Helen Lam

California Energy Commission
1516 Ninth Street, MS-37
Sacramento, CA 95814-5512

**Need Help? Call the Energy Hotline
(800) 772-3300 or (916) 654-5106**

CEC-400-2009-008-BR-REV1
June 2011

Prepared by:
Architectural Energy Corporation
San Francisco, California
Contract No. 400-05-020

Photo on page 4 courtesy of The Energy Conservatory.
Photos on page 7 courtesy of: National Renewable Energy
Laboratory, CertainTeed, and Carrier.

Published by the California Seismic Safety Commission

Homeowner's Guide to Earthquake Safety

2020 EDITION



State of California
Gavin Newsom
Governor

SSC No. 20-01



The *Homeowner's Guide to Earthquake Safety* was developed and published by the California Seismic Safety Commission. It is distributed under the provisions of the Library Distribution Act and Government Code Section 11096.*

*Copyright 2020 by the California Seismic Safety Commission.
All rights reserved.*

Legislation

This guide has been developed and adopted by the California Seismic Safety Commission as required by Assembly Bill 2959, authored by Assemblymember Johan Klehs (Chapter 1499, Statutes of 1990), and by Assembly Bill 200, authored by Assemblymember Dominic Cortese (Chapter 699, Statutes of 1991).

Ordering Information

Single copies of this booklet are available from the

California Seismic Safety Commission

2945 Ramco St. #195
West Sacramento, CA 95691

To order call (916) 263-5506 or download an online copy at

http://ssc.ca.gov/forms_pubs/index.html

*Cover photo: Collapsed two-story home. Nigel Spiers, 2011
Shutterstock, Enhanced License*

**Disclaimer: The effects, descriptions, recommendations and suggestions included in this Guide are intended to improve earthquake preparedness; however, they do not guarantee the safety of an individual or a structure. The California Seismic Safety Commission takes responsibility for the inclusion of material in this Guide. The State of California, the California Seismic Safety Commission, and all contributors to this document do not assume liability for any injury, death, property damage, loss of revenue, or any other effects of earthquakes.*

Effective July 1, 2020, the 2020 edition of the *Homeowner's Guide to Earthquake Safety* replaces the 2005 edition.



Introduction

EARTHQUAKES ARE INEVITABLE IN CALIFORNIA.

They can occur at any time and without warning. They can be extremely destructive and even deadly.

As a current or future owner of a home*, you should be aware of the risks—potentially considerable and catastrophic—that earthquakes pose to your property and to the safety of you and your family.

THIS GUIDE is designed to help you prevent injuries, save lives, and avoid costly property damage from earthquakes. It provides information on:

- The most common earthquake-related hazards that can damage homes
- How to find and then fix the potential structural risks in a home
- How to find more information on earthquake safety

If you sell your home, this Guide also will help you meet your requirements under California law.

There are no guarantees of safety during earthquakes, but properly constructed and strengthened homes are far less likely to collapse or be damaged during earthquakes. The California Seismic Safety Commission advises you to act on the suggestions outlined in this Guide and make yourself, your family, and your home safer.

**In this Guide, "home" means single-family residences, duplexes, triplexes, and four-plexes. Under California law, a seller of a home built before 1960 must fulfill certain disclosure requirements as part of the sales process (see page 4).*

USING THIS GUIDE PAGE

Selling or Buying a Home	4
Earthquake Hazards in California	6
Residential Earthquake Risks & the Disclosure Statement	12
Tips for a Successful Retrofit	26
Earthquake Safety Tips	30
Other Information	34

\$55+
BILLION

Earthquake related losses in California since 1971

\$12+
BILLION

Estimated home damage in the 1994 Northridge Earthquake

Selling or Buying A Home: Requirements & Recommendations

SELLING A HOME

If you are selling a home built before 1960, California law* requires you to:

- Properly strap the water heater.
- Provide buyers with the following documents:
 - A Residential Earthquake Risk Disclosure Statement (page 13), where you identify known home risks
 - A Natural Hazard Disclosure Statement, where you indicate if your home is in an Earthquake Fault Zone or Seismic Hazard Zone. Ask your realtor for a copy of this Disclosure Statement.
 - A copy of this Guide (Your real estate agent is required to give you the Guide.)
 - Note: If you list your home through a real estate agent or broker, you should have him or her give the documentation to the buyer.
- **Note:** Keep a copy of all documentation signed by the buyer as evidence that you complied with the requirements.

Under the law, you are NOT required to:

- Remove siding, drywall, or plaster to complete the disclosure statements.
- Hire someone to evaluate your home or to complete the disclosure statements. You may seek the assistance of a certified home inspector or a licensed contractor, architect, or engineer.
- Fix the risks before you sell your home; on the other hand, making the improvements could increase your home's value.

*A summary of the relevant California laws related to seismic safety is included at the end of this Guide (page 35).



BUYING A HOME

Before you agree to buy a home, you should consider the following:

- Have a certified home inspector, licensed building contractor, engineer, or architect inspect the home and give an opinion on existing earthquake risks and the estimated cost to strengthen the home.
- Check the location of the home to determine if it is in an Alquist-Priolo Earthquake Fault Zone or an area susceptible to landslides, liquefaction, or tsunami. A licensed geotechnical engineer and/or engineering geologist can help you answer these questions and check the stability of the land under the home.
- Negotiate with the seller the cost of any proposed repairs or upgrades. State law does not require either the seller or buyer to strengthen a home against earthquake risks. However, the cost to repair a home after a damaging earthquake may far exceed the costs to strengthen the home and reduce the risks.

Property Tax Exclusion

Under California law (Revenue and Tax Code, Section 74.5), a homeowner can implement seismic-strengthening measures without a property tax reassessment. To receive the exclusion, you must have the work approved by the local building department and file a claim form with your county tax assessor.

Earthquake Insurance

Typically, residential property insurance does **not** include earthquake coverage. A homeowner may purchase a separate earthquake policy. Information on earthquake insurance is on page 37.

Earthquake Hazards

KNOW IF YOUR HOME IS AT RISK

Earthquakes occur in California every day. As a homeowner, you should know if your home is in an area that is more prone to earthquakes or if the geology or soil conditions of your neighborhood or community present greater risk during an earthquake. The more you know, the better able you are to take appropriate precautions to protect your home and family.

Is your home near an active earthquake fault or an area prone to severe shaking?

See the maps on pages 10 & 11.

Requirements under the law: If you are selling your home or any other type of real estate, no matter its age, you must disclose to buyers information about natural hazards that can affect the property, including flood and fire hazards and earthquake hazards. You report this information on the Natural Hazard Disclosure Statement.

The most common earthquake-related natural hazards are **ground shaking, fault ruptures, landslides, liquefaction, and tsunami**. In addition, earthquake damage to a dam can be a hazard to "downstream" homes.



Earthquake Hazards

GROUND SHAKING



Guy Morrow, 2004

In California, ground shaking causes 99% of earthquake damage to homes. Homes in areas near large active faults are more likely to feel severe shaking—and experience damage—than homes in other areas of the state.

FAULT RUPTURE



A strong earthquake can cause the two sides of a fault to suddenly slide by one another. Even a relatively minor fault rupture can cause foundation and structural damage requiring expensive repairs.

Pilar Villamor, GNS Science, 2016

Earthquake Hazards

LANDSLIDE



Earthquake shaking can be strong enough to cause soil and rock on a hillside to slide down the slope. A landslide can rip apart homes at the top of the slope and also crush homes at the bottom of the slope.

Al Seib, Los Angeles Times, 1994

LIQUEFACTION



Graeme Beattie, BRANZ, 2011

Strong ground shaking can cause liquefaction—excess pore water pressure that reduces the soil's ability to support structures. Liquefaction can cause structures to tilt or collapse.



Earthquake Hazards

TSUNAMI



National Oceanographic and Atmospheric Administration, 1964

California's coastal areas are prone to damage from tsunami—a series of large ocean waves caused by an underwater earthquake or landslide. Tsunami waves can travel a great distance and cause flooding or wash away structures in low-lying areas along the shore, in and along harbors, and along the banks of rivers. Tsunamis generated by the 1964 Alaskan earthquake (magnitude 9.2) and the 2011 Japan earthquake (magnitude 9.0) caused property damage and loss of life in California.

Is your home at risk of a tsunami?

Check with your County's office of emergency services.

DAM FAILURE



E. V. Leyendecker, United States Geological Survey, 1971

A very strong earthquake could damage a dam, resulting in sudden and devastating flooding of nearby homes. The 1971 San Fernando earthquake damaged the Lower San Fernando Dam, which sits less than half-mile above the neighborhoods of the San Fernando Valley in southern California. The risk of an aftershock forced the three-day evacuation of residents of an 11-square-mile area.

Is your home near a dam?

Check with your County's office of emergency services for a dam inundation map, which shows the location of major dams and areas that could flood in the event of a dam failure.

BETTER SAFE THAN SORRY

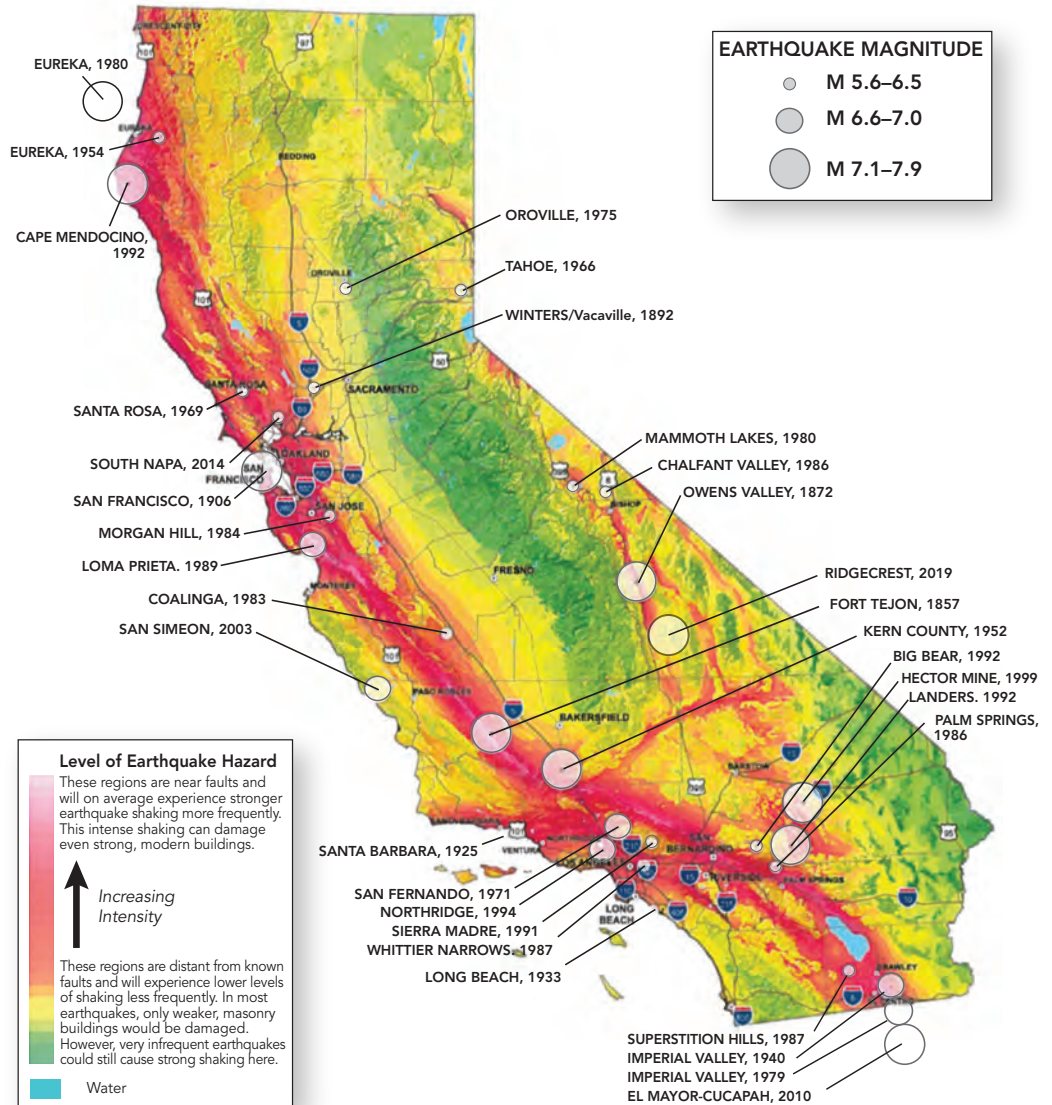
If you live in a low-lying coastal area or an area near a dam (dam inundation zone), know where to evacuate to higher ground and be prepared to evacuate immediately after an earthquake.

Earthquake Shaking Potential for California

This map shows the relative intensity of ground shaking in California from anticipated future earthquakes and significant earthquakes that have occurred since the Great 1857 magnitude 7.9 Fort Tejon earthquake. Although the greatest hazard is in areas of highest intensity as shown on the map, no region is immune from potential earthquake damage.

\$3+
BILLION
PER YEAR

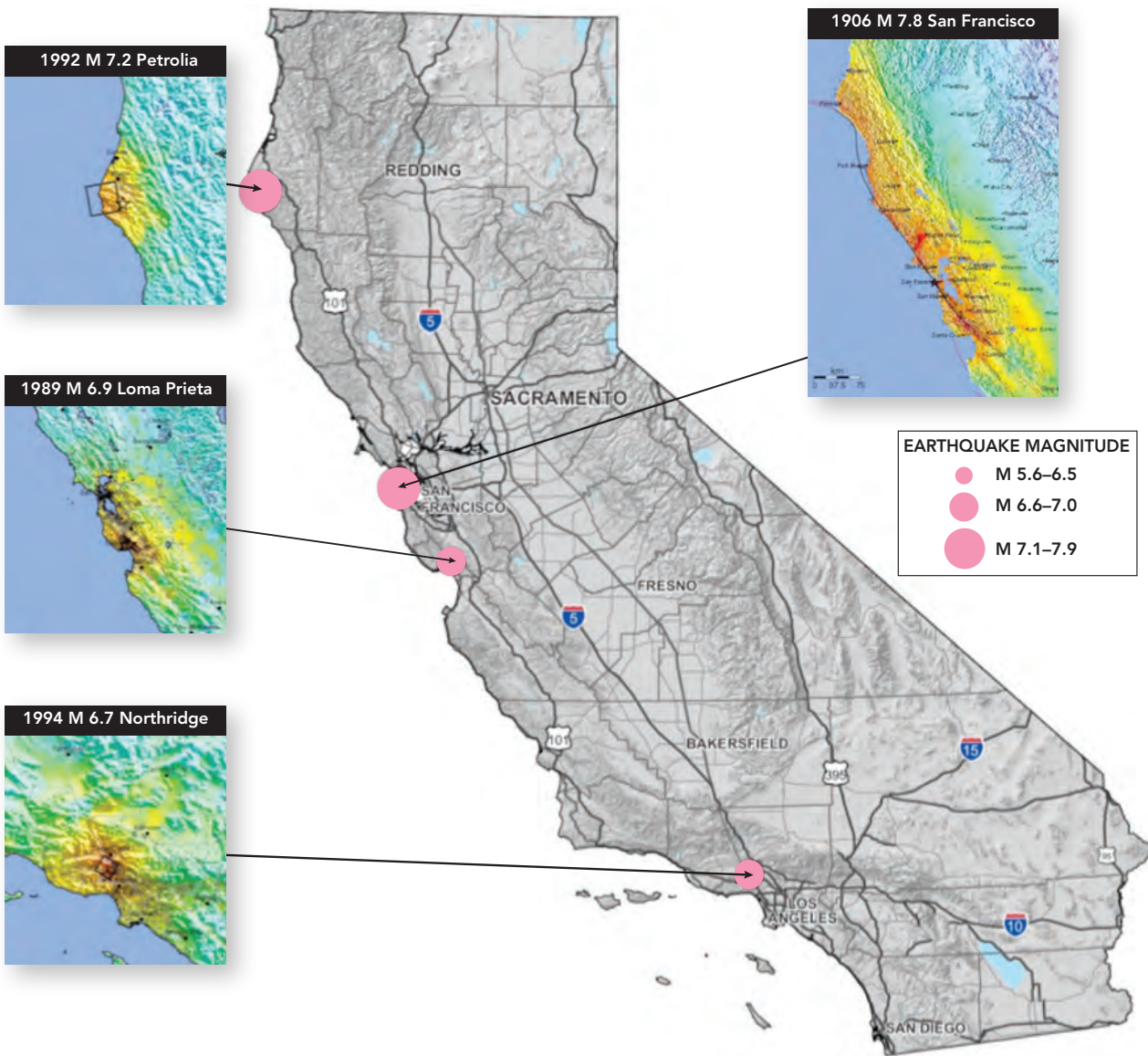
Expected long-term average earthquake damage in California





Significant Historical Earthquakes and Their ShakeMaps

The ShakeMaps (inserts) show areas of moderate-to-heavy ground shaking in four historical earthquakes.



ShakeMap Explanation

INSTRUMENTAL INTENSITY	I	II-III	IV	V	VI	VII	VIII	IX	X+
PERCEIVED SHAKING	NOT FELT	WEAK	LIGHT	MODERATE	STRONG	VERY STRONG	SEVERE	VIOLENT	EXTREME
POTENTIAL DAMAGE	NONE	NONE	NONE	VERY LIGHT	LIGHT	MODERATE	MOD/HEAVY	HEAVY	VERY HEAVY

Source: USGS

Residential Earthquake Risks & the Disclosure Statement

Earthquakes in California can occur at any time and without warning. To prevent injuries and avoid costly property damage, homeowners should determine the potential for earthquake risks in their homes and then retrofit or upgrade these conditions. If not corrected, these risks can lead to:

- Severe property damage, including foundation damage and damage to floors, walls, and windows
- Loss of personal property
- Broken utilities, which can result in fire, water damage, and spread of toxic substances
- Personal injuries

In addition, under California law, sellers of homes built before 1960 must disclose known earthquake risks to buyers as part of the property sales process.

Completing the Residential Earthquake Risk Disclosure Statement

When you sell a home built before 1960, you are required to fill out the Residential Earthquake Risk Disclosure Statement, (see next page) and give the completed statement to the buyer. You are required to answer each question to the best of your knowledge.

To complete the Disclosure Statement, answer:

- “Yes” if you know your home is protected from the risk (e.g., for Item #1, answer “Yes” if your home’s water heater is properly braced)
- “No” if you know your home is at risk (e.g., for Item #6, answer “No” if your home’s exterior brick walls are not strengthened)
- “Doesn’t Apply” if the question is not relevant to your home (e.g., for Item #7, answer “Doesn’t Apply” if your home does not have a living space over the garage)
- “Don’t Know” if you do not have adequate information to answer the question

IN THIS SECTION PAGE

Completing the Residential Earthquake Risk Disclosure Statement	12-13
Identifying and Disclosing Earthquake Risks	14-25
Water Heaters	14
Unbolted Foundations	15
Crawl Space (Cripple) Walls	17
Pier-and-Post Foundations	18
Unreinforced Masonry Foundations	19
Hillside Homes	20
Unreinforced Masonry Walls	21
Rooms over Garages	22
Unreinforced Masonry Chimneys	23
Inadequate Foundation	24
Homes with Unique Designs	25

You are not required to remove siding, drywall, or plaster or to hire an inspector to determine the answer to a question. Also, you are not required to fix or retrofit your home before you sell the property.



Residential Earthquake Risk Disclosure Statement (2020 Edition)

Name _____ Assessor's Parcel No. _____

Street Address _____ Year Built _____

City _____ County _____ Zip Code _____

Answer these questions to the best of your knowledge. If any of the questions are answered "No," your home is likely to have an elevated/disclosable earthquake risk. If you do not have actual knowledge as to whether these risks exist, answer "Don't Know." Questions answered "Don't Know" may indicate a need for further evaluation. If your home does not have the feature, answer "Doesn't Apply." If you corrected one or more of these risks, describe the work on a separate page. The page numbers in the right-hand column indicate where in this guide you can find information on each of these features.

	Yes	No	Doesn't Apply	Don't Know	See Page
1. Is the water heater braced to resist falling during an earthquake?	<input type="checkbox"/>	<input type="checkbox"/>	<input type="checkbox"/>	<input type="checkbox"/>	14
2. Is your home bolted to its foundation?	<input type="checkbox"/>	<input type="checkbox"/>	<input type="checkbox"/>	<input type="checkbox"/>	15
3. If your home has crawl space (cripple) walls:					
a. Are the exterior crawl space (cripple) walls braced?	<input type="checkbox"/>	<input type="checkbox"/>	<input type="checkbox"/>	<input type="checkbox"/>	17
b. If the exterior foundation consists of unconnected concrete piers and posts, have they been strengthened?	<input type="checkbox"/>	<input type="checkbox"/>	<input type="checkbox"/>	<input type="checkbox"/>	18
4. If the exterior foundation, or part of it, is made of unreinforced masonry, has it been strengthened?	<input type="checkbox"/>	<input type="checkbox"/>	<input type="checkbox"/>	<input type="checkbox"/>	19
5. If your home is on a hillside:					
a. Are the exterior tall foundation walls braced?	<input type="checkbox"/>	<input type="checkbox"/>	<input type="checkbox"/>	<input type="checkbox"/>	20
b. Are the tall posts or columns either built to resist earthquakes or have they been strengthened?	<input type="checkbox"/>	<input type="checkbox"/>	<input type="checkbox"/>	<input type="checkbox"/>	20
6. If the exterior walls of your home are made of unreinforced masonry, either completely or partially, have they been strengthened?	<input type="checkbox"/>	<input type="checkbox"/>	<input type="checkbox"/>	<input type="checkbox"/>	21
7. If your home has a room over the garage, is the wall around the garage door opening built to resist earthquakes or has it been strengthened?	<input type="checkbox"/>	<input type="checkbox"/>	<input type="checkbox"/>	<input type="checkbox"/>	22
8. Is your home outside an Alquist-Priolo Earthquake Fault Zone (an area immediately surrounding known active earthquake faults)?	<i>To be reported on the Natural Hazard Disclosure Statement</i>				
9. Is your home outside a Seismic Hazard Zone (an area identified as susceptible to liquefaction or a landslide)?	<i>To be reported on the Natural Hazard Disclosure Statement</i>				

As seller of the property described herein, I have answered the questions above to the best of my knowledge in an effort to disclose fully any potential earthquake risks it may have.

EXECUTED BY

Seller _____ Seller _____ Date _____

I acknowledge receipt of the *Homeowner's Guide to Earthquake Safety* and this Disclosure Statement, completed and signed by the seller. I understand that if the seller has answered "No" to one or more questions, or if the seller has indicated a lack of knowledge, there may be one or more earthquake risks in this home.

Buyer _____ Buyer _____ Date _____

This Disclosure Statement is made in addition to the standard real estate transfer disclosure statement also required by law.

Earthquake Risk Disclosure Statement Item 1



During an earthquake, an unbraced water heater can topple, which can start a fire or lead to major water damage.

Is your home's water heater braced?

If your home's water heater is not properly braced, or if it has rigid rather than flexible pipes, the water heater may move or topple during an earthquake. This movement can break gas or water lines, resulting in fire, water damage, or release of toxic gas.

Under California law, you are required to brace your home's water heater whenever you install a new water heater or if you sell the home.

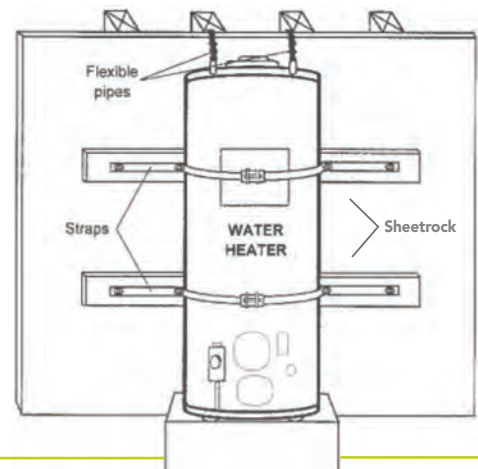
How to Check for Proper Water Heater Bracing

1. Examine your home's water heater.
2. Look for two sets of straps that wrap around the water heater and securely bolt the water heater to the wall and wall studs (see diagram).

Tankless Water Heater?

If you have a tankless water heater, be sure it is securely attached to the wall and that its pipes are installed according to the manufacturer's instructions.

PROPER WATER HEATER BRACING



WANT TO RETROFIT?

Find out more on pages 26-29.



Earthquake Risk Disclosure Statement Item 2

Is your home bolted to its foundation?

If your home is not bolted to its foundation, it could slide off the foundation during an earthquake.

- A home that has moved can cause gas, water, and sewer lines to break, resulting in fire, water damage, and release of toxic fluids.
- Lifting a home back onto its foundation is difficult and expensive.

How to Check for Foundation Bolting

1. Determine if your home has a crawl space, which will be below the first floor.
Clue: If your home has steps leading to an exterior door, the home probably has a crawl space. If you have no steps, the home is most likely built on a concrete slab and has no crawl space. If you do not have a crawl space, see "What If" section on next page.
2. Go into the crawl space. Access will be through a small removable panel or door along an exterior wall or from inside the garage.
3. Look for areas of unfinished wood framing at base of walls (see diagram). If the crawl space has finished wood framing, see "What If" section.
4. Find sill plates (wood boards that sit directly on top of foundation) and look for anchor bolts that fasten sill plates to foundation (see diagram on next page).
 - **Adequate bolting:** Bolts with nuts and square washers spaced every 4 to 6 feet
 - **Inadequate bolting:** No visible bolts



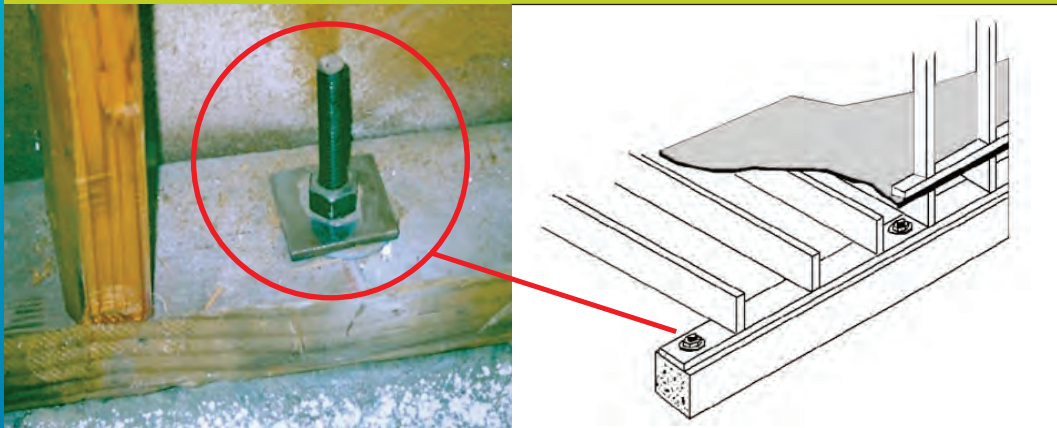
WANT TO RETROFIT?
Find out more on pages 26-29.

WHAT IF . . .

- Q** My home does not have a crawl space?
- A** Particularly after 1960, many California homes were built directly on concrete slabs. Fortunately, most of these homes and other post-1960 homes built to code have anchor bolts.
- Q** The crawl space has finished framing, so I cannot see the sill plates or anchors?
- A** You are not required to remove siding, drywall or plaster to determine if your home's foundation has anchor bolts.

For both situations, check "Don't Know" on the Disclosure Statement.

LOCATING FOUNDATION BOLTS



WANT TO RETROFIT?
Find out more on pages 26-29.



Earthquake Risk Disclosure Statement Item 3a

Are your crawl space (cripple) walls braced?

If your home has a crawl space with un-braced walls, these crawl space (cripple) walls could collapse during an earthquake, which, in turn, may cause your entire home to collapse or lead to major damage to the structure as well as possible fire, water line breaks and injuries.

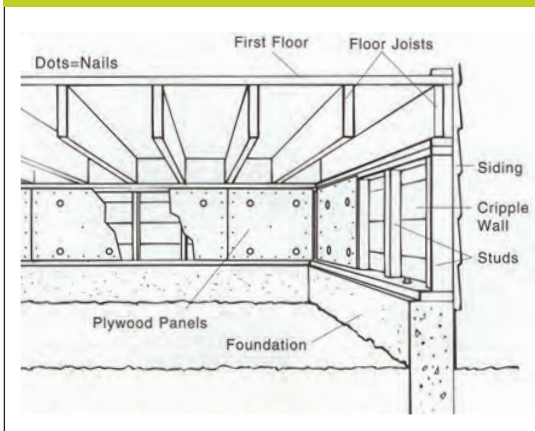


This older home collapsed after earthquake shaking damaged its crawl space (cripple) walls.

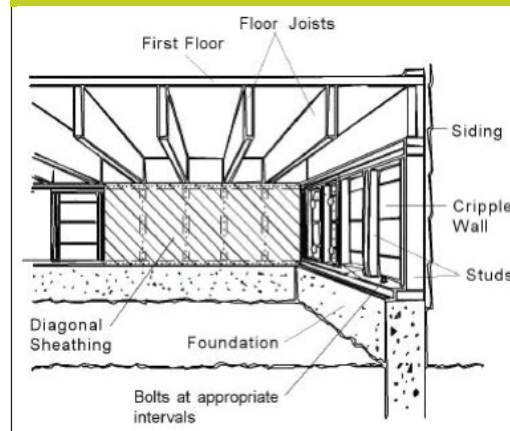
How to Check for Bracing of Crawl Space Walls

1. Determine if your home has a crawl space with cripple walls.
 - Clue:** If your home has three or more steps leading to an exterior door, the home has a crawl space below the first floor and, therefore, has cripple walls.
2. Go into the crawl space. Access will be through small removable panel or door along an exterior wall or from inside the garage.
3. Examine the inside surfaces of the exterior walls.
 - **Adequate bracing:** Plywood or diagonal sheathing on exterior walls (see diagrams)
 - **Inadequate bracing:** No plywood or diagonal sheathing

PLYWOOD OR ORIENTED STRAND BOARD



DIAGONAL SHEATHING



WANT TO RETROFIT?
Find out more on pages 26-29.

Earthquake Risk Disclosure Statement Item 3b

Is your home's pier-and-post foundation strengthened?

If your home sits on large wood posts that rest on unconnected concrete piers, the posts may not be braced properly. During an earthquake, the posts could fail and your home could shift or collapse.

How to Check for Pier-and-Post Foundation Strengthening

1. Go under the home and determine the type of foundation that supports the exterior walls.
 - Continuous perimeter foundation wall (check "Does Not Apply" on the statement)
 - Concrete piers and wood posts
2. For concrete piers and wood posts, look further to determine if the foundation is adequately braced or strengthened.
 - **Adequate bracing:** A continuous foundation around the perimeter edges of the home that consists of either reinforced concrete or reinforced masonry.
 - **Inadequate bracing** along the perimeter edges of the home:
 - Wood posts supported by concrete piers, or
 - Wood posts without concrete piers or continuous perimeter foundations



This home's pier-and-post foundation was damaged during an earthquake. The diagonal bracing was added after the earthquake to temporarily stabilize the home during repairs.



WANT TO RETROFIT?

Find out more on pages 26-29.



Earthquake Risk Disclosure Statement Item 4

Is your home's unreinforced masonry foundation strengthened?

If your home is supported by a brick, stone or concrete block foundation that lacks steel reinforcing, the foundation may not be able to resist earthquake shaking. Your home could slide off its foundation during an earthquake, damaging the walls and floors, rupturing utility connections, and destroying the contents of your home. This, in turn, could lead to fire, water damage, and injuries.



How to Check an Unreinforced Masonry Foundation

1. Walk around the perimeter of your home to determine the composition of the foundation. If the foundation has siding or a plaster finish, you will need to check the foundation from inside the crawl space.
 - Solid concrete foundation (check "Does Not Apply" on the statement)
 - Unreinforced brick, stone, or concrete block foundation
2. For unreinforced brick, stone, or concrete block foundation, look further to determine if the foundation is adequately braced or strengthened (e.g., steel plates attached to foundation walls). If you do not know what to look for, consult a licensed engineer or architect.



WANT TO RETROFIT?
Find out more on pages 26-29.

Earthquake Risk Disclosure Statement Item 5



The balcony of this hillside home partially collapsed and the home tilted when the stilt-type support posts and poorly braced walls shifted during an earthquake.

Does the foundation of your hillside home have adequate support?

Hillside homes require special engineering to resist earthquake shaking.

If your home is built on a hillside and the home's tall foundation walls and stilt-type support posts are not properly braced, your home could collapse during an earthquake, causing severe damage to the home and injuries.

How to Check the Foundation of a Hillside Home

1. Walk around the perimeter of your home to examine both the tall foundation walls and the tall posts or columns that support the home.
2. Examine the exterior tall foundation walls for evidence of extensive wall bracing below the home.
3. If you do not know what to look for, consult a licensed engineer or architect.



WANT TO RETROFIT?

Find out more on pages 26-29.



Earthquake Risk Disclosure Statement Item 6

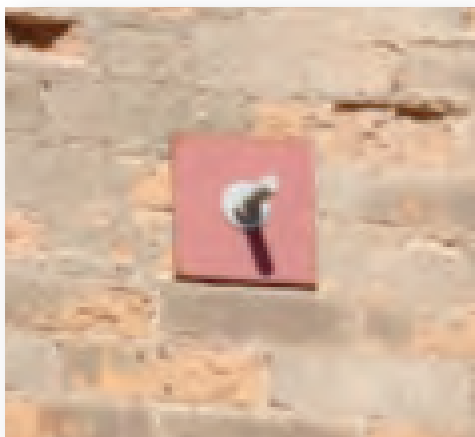
Are your home's unreinforced masonry walls strengthened?

If your home has walls built of unreinforced masonry—brick, hollow clay tiles, stone, concrete blocks, or adobe—the walls may be too brittle to resist earthquake shaking. As a result, the walls could collapse in an earthquake.



How to Check for Unreinforced Masonry Walls

1. Walk around the perimeter of your home to examine the composition of the exterior walls. Look for evidence of unreinforced brick, clay tile, stone, adobe, or concrete-block wall construction.
 - Look closely at wall surfaces at windows and doors.
 - If the exterior walls are covered with plaster, examine the walls from inside the home (e.g., beneath light switch plates).
2. If the exterior walls are built of masonry, check further for the strength of construction or for indicators of retrofit. Steel plates and anchor bolts are common retrofits (see photo).
3. If you do not know what to look for, consult a licensed engineer or architect.



A steel plate with anchor bolts.



WANT TO RETROFIT?
Find out more on pages 26-29.

Earthquake Risk Disclosure Statement Item 7



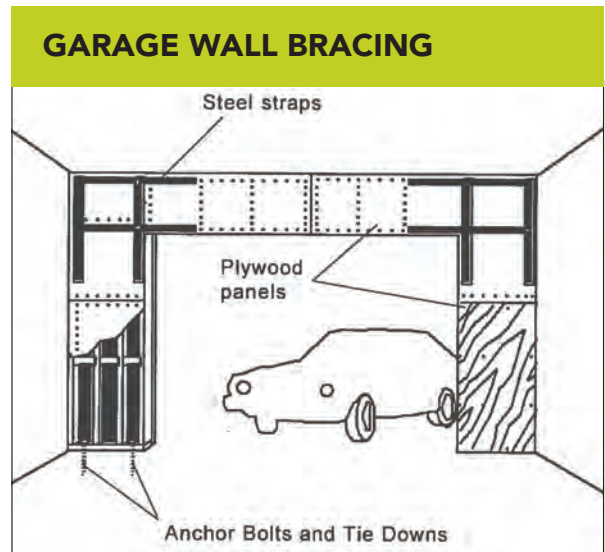
The walls around the garage door of this home were not strong enough to withstand the shaking of the 1989 Loma Prieta Earthquake.

Does your home have a room above the garage?

If your home has a room above the garage, you need to ensure that the narrow walls on either side of the garage doorway are strong enough to withstand earthquake shaking. Without adequate support, these walls could collapse, causing serious damage and injuries.

How to Check the Strength of a Garage with a Room Above

1. Go into your garage and examine the walls on both sides of the garage doorway. If the garage has been built or strengthened to support a second story, you will see plywood bracing on the walls and metal straps (see diagram).
2. If you do not know what to look for, consult a licensed engineer or architect.



Adequate bracing for a garage wall includes plywood and metal straps.



WANT TO RETROFIT?

Find out more on pages 26-29.



Other Structural Risks

Your home also may have other structural issues that could result in serious property damage or injuries during an earthquake. These risks are not included in the Residential Earthquake Risk Disclosure Statement because, typically, it is not cost effective to complete a retrofit. On the other hand, these risks should be considered if you are a homeowner or a potential home buyer.

UNREINFORCED MASONRY CHIMNEY

If your home has an unreinforced brick or stone chimney, it could collapse during an earthquake and fall on the ground beside the home or fall through the roof into your home (see photos).

How to Check Your Chimney

To determine if your chimney will withstand an earthquake:

1. Check the mortar with a screwdriver. If the mortar crumbles, it may be too weak to withstand earthquake shaking.
2. Access the attic area above the fireplace to verify that the chimney is securely attached to the home with metal straps or ties.
3. If you are unable to verify the strength of the chimney, consult a licensed engineer or architect or a general contractor.

How to Protect against Damage and Injuries (Safety Precautions)

- Avoid parking cars or locating patios or children's play areas within the falling radius of a chimney.
- Remind home occupants to stay away from chimneys and fireplaces during earthquakes.



California Earthquake Authority, 2014



Bay Area Regional Earthquake Preparedness Project, 1989



WANT TO RETROFIT?
Find out more on pages 26-29.

Other Structural Risks

INADEQUATE FOUNDATION

A wood foundation or a foundation of concrete or masonry that is cracked or crumbling may not have the strength to withstand earthquake shaking.

How to Check the Condition of Your Foundation

Determining if a foundation is susceptible to earthquake damage can be a challenge, and the advice of a licensed engineer or architect or a foundation contractor may be necessary.

Wood foundation: In the past, some homes were built on wood beams laid directly on the ground without concrete or masonry supports. If you do not see concrete or masonry foundation walls along the perimeter of your home, your home may have a wood foundation.

Deteriorating masonry: Older concrete or stone foundations can deteriorate over time and become too weak to withstand earthquake shaking. Large cracks, crumbling, or rock pockets are visual signs of deterioration. You also can poke a screwdriver into a foundation wall to check its strength; if the concrete or stone crumbles easily, the foundation may be vulnerable to earthquake damage.



WANT TO RETROFIT?

Find out more on pages 26-29.



Other Structural Risks

HOMES WITH UNIQUE DESIGNS

If not designed adequately and with earthquakes in mind, homes with unique designs can be prone to damage from earthquake shaking.

Unique design features include homes with:

- Large porches or overhangs
- Large windows or window walls
- Three or more stories
- Irregular shapes

Evaluation and Options

In many cases, homes with unique designs have been built to withstand earthquake shaking. Identifying if a home has been strengthened can be difficult. Consulting with a licensed engineer or architect for a seismic evaluation can be helpful.



You can make large windows safer by applying plastic film to the glass.



WANT TO RETROFIT?
Find out more on pages 26-29.

Tips for a Successful Retrofit

MAKE A PLAN: DEFINE THE SCOPE OF WORK AND HOW TO ACCOMPLISH THE PROJECT

The first step in an earthquake retrofit or upgrade is to ensure that you, as the homeowner, understand the work that will be required for the retrofit project and the required building and performance standards. You should not rush into repairs, no matter how badly they are needed, or hire the first contractor you meet with.



Define Scope of Work

Defining the scope of a retrofit or upgrade project is a critical first step. Additional resources are listed on page 34.

Reminders:

- For any retrofit project, be sure to consult with your local building department for advice on the State's requirements, local building codes and standards.
- To determine the best solution for a retrofit, you may want to consult a licensed engineer or architect or a general contractor that specializes in this type of work.
- You or your contractor will need to obtain a building permit from your local building department.
- When evaluating the cost of a retrofit, remember to consider both the economic value of the work and the value to your "peace of mind."



Water Heater Bracing

Under California law, you are required to brace the water heater when you install a new water heater and when you sell your home.

You can brace a water heater yourself using a strap kit, available from a local hardware store. Or, you can hire a plumber or handyperson to do the work. The diagram on page 14 illustrates proper water heater bracing.

As an added safety precaution, consider having a licensed plumber replace any rigid pipes with flexible pipes, which will better withstand shaking during an earthquake.

Simple Retrofit Projects

The *California Existing Building Code, Appendix A, Chapter A3* contains how-to information for retrofitting. *FEMA P-1100, Volume 2A* is also easy to use and accepted for retrofits by local building departments. Do-it-yourself homeowners can undertake simple retrofits without hiring an engineer, architect, or contractor.

Types of Simple Retrofit Projects

- **Foundation bolting:** To add or retrofit a foundation bolting system requires drilling new holes into the foundation and installing bolts.
- **Crawl space wall bracing:** To add or retrofit the wall bracing in a crawl space requires nailing new plywood or oriented strand board to crawl space studs. **Note:** For crawl spaces taller than four feet, consult *FEMA P-1100, Volume 2A*.

More Complicated Retrofit Projects

By their nature, some earthquake retrofit projects are more complicated and will require the expertise of a licensed engineer or architect and/or a general contractor who specializes in this type of work.

- **Pier-and-post foundation:** You may be able to strengthen a pier-and-post foundation system adequately with bracing; alternatively, the best solution may be to install a new, continuous foundation.

- **Unreinforced masonry foundation:** You may be able to replace or supplement all or part of an existing foundation with a new reinforced concrete or masonry foundation.
- **Other inadequate foundation:** If your home's foundation is inadequate (see pages 19, 24), you may need to add a new or replace an existing foundation to reduce the risks of earthquake damage.
- **Unreinforced masonry walls:** In most cases, retrofitting unreinforced masonry walls requires 1) better connecting the walls to the roof and floors and 2) installing steel frames or reinforced concrete. In some cases, large steel plates must be attached with anchor bolts through the masonry (see photo on page 21). Engineering information is in the *California Existing Building Code, Appendix A, Chapter A1*.
- **Unreinforced masonry chimney:** Strengthening or bracing a chimney can be expensive. Retrofit options include:
 - o Adding plywood panels either above ceiling joists or, when re-roofing, on roof framing
 - o Removing or replacing all or a portion of the chimney with lighter-weight material (e.g., using a metal flue for the upper portion of a chimney). (see *FEMA P-1100, Volume 2C*)
- **Garage walls:** Engineering information on retrofitting garage walls is in the *California Existing Building Code* or *FEMA P-1100, Volume 2B*.
- **Hillside homes:** Retrofitting hillside homes includes strengthening foundations, walls, columns and diagonal bracing. Engineering information is in the *California Existing Building Code* or the *FEMA P-1100* publication.
- **Historical homes:** Your project will need to comply with the *California Historical Building Code*.

Keep Your Retrofit Documents

Once your project is complete, remember to keep all plans, permits, and other project records so you can provide them to a future home buyer.



Select a Licensed Contractor

A critical step is to find and hire the right contractor for your job.

Be sure you:

- Discuss your project with at least two and, ideally, more licensed contractors.
- Obtain a written proposal from each contractor. Do not accept verbal promises. Be sure to compare the proposals to ensure the scope of work in each proposal (project description) meets your needs and are similar. Examine all terms of the proposal (e.g., price, project plan and timeframe, use of subcontractors). Consider each contractor's experience with residential earthquake retrofitting. The lowest-priced bid may not be the best bid.
- Ask for and then check with references.
- Before finalizing a contract, verify that your preferred contractor's state license is current and that your contractor is licensed to do business in your community.



You will find useful a number of publications from the Contractor's State License Board. Visit www.cslb.ca.gov.

- *What You Should Know before Hiring a Contractor:*
Provides information on how to find, hire and work with a contractor
- *A Consumer Guide to Home Improvement Contracts:*
Provides information on the legal obligations of home improvement contractors

Avoid Contractor Payment Pitfalls

- For any project that costs \$500 or more, a licensed contractor must provide a written contract.
- Pay the contractor in installments as the work is completed.
 - Keep the down payment low. By law, a down payment on a home improvement contract cannot exceed 10% of the contract price or \$1,000, whichever is less.
 - Withhold at least 10% of the total contract price until the project is completed to your satisfaction.
 - Do not make the final payment until the local building department has signed off on the work and you have conducted a final review of the work to make sure it is complete and correct.

Earthquake Safety Tips

Precautions: During an Earthquake

If you are indoors: Drop, cover and hold on.

- Get under a sturdy desk or table and hang on to it OR move into a hallway OR get against an interior wall.
- Stay clear of windows, fireplaces, and heavy furniture or appliances.
- Get out of a kitchen or any area that has numerous objects that can fall.
- Do not run downstairs or rush outside while the building is shaking. Debris may be falling and/or you might fall and sustain an injury.

If you are outdoors: Get into an open area.

Move away from buildings, power lines, chimneys, and anything else that might fall on you.

If you are driving: Prepare to stop.

- Move as far out of traffic as possible.
- Do not stop on or under a bridge or overpass or under trees, light poles, power lines, or signs.
- Remain in your car until the shaking stops.
- After you resume driving, watch for cracks or bumps in the road and fallen objects.

If you are near a steep hillside: Watch for landslides.

Earthquakes can loosen rocks, trees, and other debris.





COASTAL AREAS: SPECIAL TSUNAMI PRECAUTIONS

An earthquake or large landslide near the coast or beneath the ocean can cause a tsunami. A tsunami may occur without warning, and the first waves—which often are not the largest—may reach the coast within minutes after the initial earthquake. And, an earthquake may result in more than one set of waves; potentially deadly tsunami waves can continue to arrive for hours and at intervals of 10 minutes or more.

During the shaking: Drop, cover, and hold on.

Watch for falling objects until the shaking stops.

After the shaking: Move (evacuate) immediately either to higher ground or inland away from the shore, and do so on foot if you cannot evacuate by vehicle. Note: Authorities may have no time to issue a warning. If you do not hear an evacuation announcement but you see a drop or rise in water level or you hear a loud noise coming from the water, move immediately and quickly away from the shore.

Stay away from the shore. Wait for an official “all clear” announcement before you return to the area.



Aftershocks may occur and you may need to continue to take precautions even after the initial earthquake.

Precautions: After an Earthquake

Check for Injuries

- If a person is bleeding, put direct pressure on the wound. Use clean gauze or cloth, if available.
- If a person is not breathing, immediately call 911. If you can, perform CPR.
- Seek medical help for other serious injuries.
- Do not attempt to move a person who is seriously injured unless there is an immediate danger of further injury.
- Cover injured persons with blankets to keep them warm.

Check for Hazards

- **Fires:** If safe to do so, immediately extinguish a fire. Otherwise, call 911.
- **Gas leaks:** If you suspect a gas leak or smell natural gas (rotten eggs), shut off the main gas valve. **Note:** Once you turn off the gas, do not turn it back on yourself. Wait for the gas utility company to check for leaks and have the company restore your service.
- **Damaged electrical wiring:** Shut off your power at the control box.
- **Downed or damaged utility lines:** Do not touch downed power lines or any objects in contact with them. Contact the local electric utility company.
- **Spills:** If you can do so safely, clean up any spilled medications or spills of other potentially harmful materials such as bleach, lye, or gasoline.
- **Downed or damaged chimneys:** Approach chimneys with caution; they may be weakened and could topple during aftershocks. Do not use a fireplace with a damaged chimney; the damage could cause a fire or leak toxic fumes into the home.
- **Broken glass:** To avoid injuries, be sure to wear sturdy shoes.
- **Fallen objects:** Look for objects that have fallen, being careful as you check closets and cupboards for objects that still might fall.



Check Food and Water Supplies

- **Lack of electricity and meal planning:** If you have no electricity, plan to first eat refrigerated and frozen foods that will spoil quickly. Refrigerated and frozen food will keep for at least two days if you do not open the doors too often.
- **Using the stove:** If you suspect a gas leak, do not turn on a stove. Even an electric stove can create a spark that could cause an explosion.
- **Outdoor cooking:** Only use barbecues or camp stoves outdoors. Do not use them indoors.



Other Information

The pages that follow provide additional information that homeowners may find useful.

Additional Resources

A number of additional resources on seismic safety and earthquake safety for homeowners are available both from the California Seismic Safety Commission and the Federal Emergency Management Administration (FEMA).

- California Seismic Safety Commission:
www.ssc.ca.gov/forms_pubs/hog.html
- FEMA: www.fema.gov
- California Building Standards Commission:
www.dgs.ca.gov/BSC/Codes

IN THIS SECTION	PAGE
Additional Resources	34
Relevant State Seismic Safety Laws	35
Earthquake Insurance	37
Acknowledgments	38



Relevant State Seismic Safety Laws

The full wording of these laws is available at <http://leginfo.legislature.ca.gov/faces/codes.xhtml>

Publishing the Guide (Business and Professions Code, Section 10149)

The California Seismic Safety Commission is required to develop, adopt, publish, and update the *Homeowner's Guide to Earthquake Safety*, containing information on geologic and seismic hazards, explanations of structural and nonstructural earthquake hazards, and recommendations for mitigating these hazards.

Delivering this Guide (Government Code, Section 8897.1- 8897.5)

Sellers of homes built before 1960 with one to four units of conventional light-frame construction must deliver to the buyer "as soon as practicable before the transfer" a copy of the *Homeowner's Guide to Earthquake Safety* and disclose certain earthquake deficiencies. The seller's real estate agent must provide the seller with a copy of this Guide to give to the buyer.

Water Heater Bracing (Health and Safety Code, Section 19211)

Water heaters must be anchored or strapped to resist falling during an earthquake. The seller must certify to the potential buyer that the water heater is properly braced.

Disclosing Risks (Civil Code, Section 1102 and following sections)

Sellers of real property must disclose known defects and deficiencies in the property—including earthquake risks and hazards—to prospective buyers.

Disclosing Natural Hazards (Civil Code, Section 1103)

Sellers of real property must disclose, using the statutory Natural Hazard Disclosure Statement, whether the property is within any of the seven mapped natural hazard areas, including those areas with earthquake faults or those areas with potential for landslides or liquefaction.

Earthquake Faults (Public Resources Code, Section 2621 and following sections)

The Alquist-Priolo Earthquake Fault Zoning Act prohibits building for human occupancy astride active faults and requires sellers of existing residences to disclose to potential buyers, on a Natural Hazard Disclosure Statement, if the property is located in a designated fault zone.

Landslide and Liquefaction (Public Resources Code, Section 2694 and following sections)

The Seismic Hazard Mapping Act requires the State to prepare maps of the zones in California most susceptible to landslide and liquefaction hazards during earthquakes and requires sellers to disclose to buyers, on a Natural Hazard Disclosure Statement, if the property is in such a zone.



Earthquake Insurance

Companies that sell residential property insurance in California are required by law to offer earthquake insurance to homeowners both at the time of initial sale of the policy and then every two years at the time of policy renewal.

The cost of earthquake insurance coverage is based on a number of factors, including a home's location, age, construction type, and value.

Every home is different. In considering earthquake insurance, a homeowner should evaluate the home's individual risk factors and then weigh the cost of earthquake coverage against the benefits. In other words, a homeowner should determine a home's potential for earthquake damage and the cost of repairs and compare these costs against the cost of coverage (less the deductible that is applicable to the policy). The advice of a licensed civil or structural engineer or architect can be helpful in determining a home's potential for damage and expected costs of repairs.

The California Earthquake Authority (CEA) website has an online calculator to help estimate earthquake insurance premiums. The calculator uses ZIP code, insured value, dwelling type, and desired coverage and deductible to estimate the premiums.

The CEA is required to provide, and the insurance companies are required to disclose, the availability of discounts on earthquake insurance premiums for older homes that have been strengthened to resist earthquake damage.

Residential insurance agents can also help homeowners locate earthquake insurers and estimate annual premiums.

California Earthquake Authority
www.EarthquakeAuthority.com

California Department of Insurance
www.insurance.ca.gov

Acknowledgments

California Seismic Safety Commission

Hon. Michael Gardner, Chair, Local Government
Mia Marvelli, Vice Chair, Building Standards Commission
Ida A. Clair, Acting State Architect
Hon. Ken Cooley, State Assembly (Alternate: Elizabeth Hess)
Mark Ghilarducci, Office of Emergency Services
Hon. Jerry Hill, State Senate (Alternate: Caitlin Armstrong)
Dr. Jorge Fernando Meneses, Geotechnical Engineer
Dr. Kit Miyamoto, Structural Engineer
Hon. David Rabbitt, Local Government
Hon. Cindy Silva, Local Government
Timothy Strack, Fire Protection
Fuad Sweiss, Mechanical Engineer
Andrew (Andy) Tran, Insurance
Ivan Wong, Seismologist

Commission Staff

Richard McCarthy, Executive Director
Robert Anderson
Lena Daniel
Michael Orille
Fred Turner
Salina Valencia

The Commission appreciates the assistance of the following organizations and individuals in preparing this version and prior versions of the Guide:

American Red Cross	City of Los Angeles
American Society of Home Inspectors	Earthquake Engineering Research Institute
Association of Bay Area Governments	Randy Goodwin, City Architect/Building Official, City of West Sacramento
AT&T (SBC)	Humboldt Earthquake Education Center
Building Education Center	International Code Council
California Association of Realtors	San Diego Association of Governments
California Building Officials	Southern California Association of Governments
California Council of the American Institute of Architects	Southern California Gas Company/SEMPRA
California Geological Survey	Structural Engineers Association of California
California Real Estate Inspection Association	
California Governor's Office of Emergency Services	

ACKNOWLEDGMENT OF RECEIPT
CONSUMER INFORMATION PAMPHLETS

Property Address _____ Date _____

I received the following required pamphlet(s) from the Broker(s) in this transaction via the links below:

Homeowner's Guide to Earthquake Safety & Environmental Hazards — a combination of the following four pamphlets (separately available on the REODISCLOSURE website)

<https://orderform.reodisclosure.com/Content/Files/ElectronicBookshelf/Combined-Hazard-Book-English-r.pdf>

- **Residential Environmental Hazards: A Guide for Homeowners, Homebuyers, Landlords and Tenants** (California Environmental Protection Agency)
<https://orderform.reodisclosure.com/Content/Files/ElectronicBookshelf/Resid-Enviro-Hazards-Guide-English-r.pdf>
- **Protect Your Family from Lead in Your Home** (U.S. Environmental Protection Agency)
<https://orderform.reodisclosure.com/Content/Files/ElectronicBookshelf/Lead-in-Your-Home-English.pdf>
- **What is your Home Energy Rating (HERS)** (California Energy Commission)
<https://orderform.reodisclosure.com/Content/Files/ElectronicBookshelf/Home-Energy-Rating-color.pdf>
- **Homeowner's Guide to Earthquake Safety** (California Seismic Safety Commission)
<https://orderform.reodisclosure.com/Content/Files/ElectronicBookshelf/Homeowners-Guide-to-EQ-Safety-English.pdf>
(Signature for Earthquake Guide only necessary if Property built before 1960.)

Buyer/Seller _____ Buyer/Seller _____

Selling Agent _____ Listing Agent _____



*First American
Natural Hazard DisclosuresSM*

Compliments of

First American Natural Hazard Disclosures

Phone: 800.527.0027 | Fax: 800.854.9625

4 First American Way, Santa Ana, CA 92707